

山特维克可乐满补充样本

- 新车削刀具、旋转刀具与整体圆柄刀具订货信息



普通车削	A
切断与切槽	B
攻丝	C
通用信息	D

普通车削

CoroTurn® TR

外圆刀具 3-4

CoroTurn® 107

刀片 5-11
外圆刀具 12

T-Max® P

刀片 13-20
外圆刀具 22-23

T-Max®

刀片 24-26

如需了解完整产品信息，敬请访问 www.sandvik.coromant.com

B

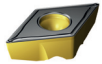
C

D

CoroTurn® TR 切削单元

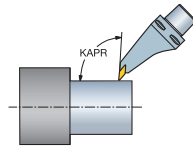
螺钉夹紧型

可乐满 Capto® - 带内冷却

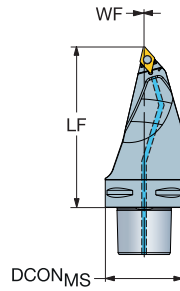


TR-DC

KAPR
PSIR



Cx-TR-D13MCR/L..C
93.0°
-3.0°



					尺寸, mm, inch							
	CZG ₆	RMPX	CNSC	订货号	DCON _{MS}	LF	WF	BAR PSI	NM	KG	MIID	
	13	C5	30°	3	C5-TR-D13MCL-00115C	50	115.0	0.0	150	3.0	1.22	TR-DC1308
						<i>1.969</i>	<i>4.528</i>	<i>.000</i>	<i>2175</i>			
		C6	30°	3	C6-TR-D13MCL-00130C	63	130.0	0.0	150	3.0	2.09	TR-DC1308
						<i>2.480</i>	<i>5.118</i>	<i>.000</i>	<i>2175</i>			
		C8	30°	3	C8-TR-D13MCL-00160C	80	160.0	0.0	150	3.0	4.29	TR-DC1308
						<i>3.150</i>	<i>6.299</i>	<i>.000</i>	<i>2175</i>			

L = 左手型

备件		
刀片螺钉	喷嘴	螺塞
5513 020-01	5691 026-03	3213 010-256

如需了解更多备件 www.sandvik.coromant.com



CoroTurn® TR 切削单元

螺钉夹紧型

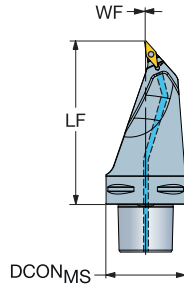
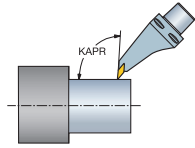
可乐满 Capto® - 带内冷却



TR-VB

KAPR
PSIR

93.0°
-3.0°



					尺寸, mm, inch						
13	C5	50°	3	订货号	DCON _{MS}	LF	WF	BAR PSI	NM	KG	MIID
					1.969	4.528	.000	2175			
	C6	50°	3	C6-TR-V13MBL-00130C	63	130.0	0.0	150	2.0	1.99	TR-VB1308
					2.480	5.118	.000	2175			
	C8	50°	3	C8-TR-V13MBL-00160C	80	160.0	0.0	150	2.0	4.05	TR-VB1308
					3.150	6.299	.000	2175			

L = 左手型

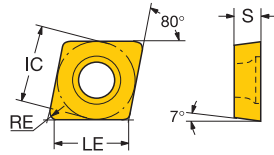
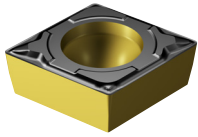
备件		
刀片螺钉	喷嘴	螺塞
5513 020-64	5691 026-03	3213 010-256


如需了解更多备件 www.sandvik.coromant.com



用于车削的 CoroTurn® 107 刀片

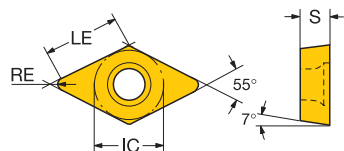
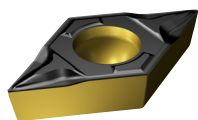
C型刀片（菱形 80°）



					ISO 代码	P		ANSI 代码	
		LE	S	RE		4425	4425		
精加工	PF	06	1/4	6.0	2.38	0.40	★	★	CCMT 2(1.5)1-PF
				.238	.094	.016			
		09	3/8	9.5	3.97	0.20	★	★	CCMT 3(2.5)0-PF
				.373	.156	.008			
半精加工	UM	06	1/4	5.6	2.38	0.79	★	★	CCMT 2(1.5)2-UM
				.222	.094	.031			
粗加工	UR	06	1/4	6.0	2.38	0.40	★	★	CCMT 2(1.5)1-UR
				.238	.094	.016			

用于车削的 CoroTurn® 107 刀片

D型刀片（菱形 55°）

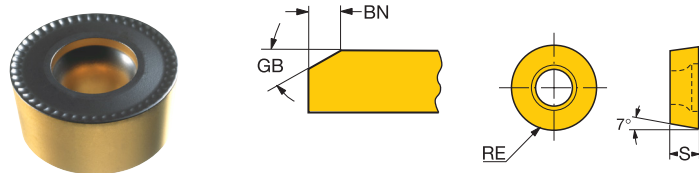


		LE	S	RE	ISO 代码	P	r	S	ANSI 代码	
						4425	4425	S205		
精加工	PF	07	1/4	7.6	2.38	0.20	DCMT 07 02 02-PF	*	*	DCMT 2(1.5)0-PF
				.297	.094	.008				
		11	3/8	11.4	3.97	0.20	DCMT 11 T3 02-PF	*	*	DCMT 3(2.5)0-PF
				.450	.156	.008				
半精加工	UM	11	3/8	11.2	3.97	0.40	DCGT 11 T3 04-UM			* DCGT 3(2.5)1-UM
				.442	.156	.016				
		10.8	3.97	0.79	DCGT 11 T3 08-UM			*	DCGT 3(2.5)2-UM	
		.426	.156	.031						




用于车削的 CoroTurn® 107 刀片

R型刀片（圆形）



公制型

									S
		S	RE	GB	BN	ISO 代码	CS	CS05	
半精加工	M0	06	2.38	3.00	0°	0.10	RCMT 06 02 M0	★	



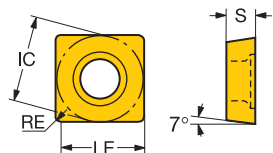
A

普通车削

刀片

用于车削的 CoroTurn® 107 刀片

S型刀片（正方形）



B

粗加工	UR				ISO 代码			P	r	ANSI 代码	
		LE	S	RE	4425	4425	★	★			
		12	1/2	12.3	4.76	0.40	★	★	SCMT 12 04 04-UR	SCMT 431-UR	
				.484	.188	.016					

C

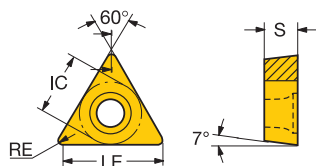
D



76

用于车削的 CoroTurn® 107 刀片

T型刀片 (三角形)



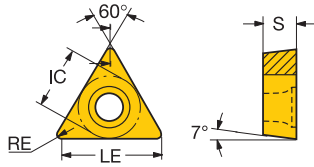
	LE	S	RE	ISO 代码	P		T		ANSI 代码	
					4415	4425	4415	4425		
粗加工	WF	09 7/32	9.0	2.38	0.40	TCMX 09 02 04-WF	★	☆	☆	TCMX 1.8(1.5)1-WF
			.353	.094	.016					
		11 1/4	10.3	3.18	0.40	TCMX 11 03 04-WF	★	☆	☆	TCMX 221-WF
			.407	.125	.016					
		9.9	3.18	0.79	TCMX 11 03 08-WF	★	☆	★	TCMX 222-WF	
		.391	.125	.031						
		16 3/8	15.7	3.97	0.79	TCMX 16 T3 08-WF	★	☆	☆	TCMX 3(2.5)2-WF
		.618	.156	.031						
		06 5/32	6.4	1.98	0.20	TCMT 06 T1 02-PF		★	★	TCMT 1.2(1.2)0-PF
		.253	.078	.008						
		6.2	1.98	0.40	TCMT 06 T1 04-PF	★	☆	★	TCMT 1.2(1.2)1-PF	
		.245	.078	.016						
	5.8	1.98	0.79	TCMT 06 T1 08-PF	★	☆	★	TCMT 1.2(1.2)2-PF		
	.229	.078	.031							
	09 7/32	9.2	2.38	0.20	TCMT 09 02 02-PF		★	★	TCMT 1.8(1.5)0-PF	
	.361	.094	.008							
	9.0	2.38	0.40	TCMT 09 02 04-PF	★	☆	★	TCMT 1.8(1.5)1-PF		
	.353	.094	.016							
	11 1/4	10.5	3.18	0.20	TCMT 11 03 02-PF		★	★	TCMT 220-PF	
	.415	.125	.008							
	10.3	3.18	0.40	TCMT 11 03 04-PF	★	☆	★	TCMT 221-PF		
	.407	.125	.016							
	9.9	3.18	0.79	TCMT 11 03 08-PF	★	☆	★	TCMT 222-PF		
	.391	.125	.031							
	16 3/8	16.1	3.97	0.40	TCMT 16 T3 04-PF	★	☆	★	TCMT 3(2.5)1-PF	
	.634	.156	.016							
	06 5/32	6.2	1.98	0.40	TCMT 06 T1 04-UF	★	☆	★	TCMT 1.2(1.2)1-UF	
	.245	.078	.016							
	09 7/32	9.0	2.38	0.40	TCMT 09 02 04-UF	★	☆	★	TCMT 1.8(1.5)1-UF	
	.353	.094	.016							
	11 1/4	10.5	2.38	0.20	TCMT 11 02 02-UF		★	☆	TCMT 2(1.5)0-UF	
	.415	.094	.008							
	10.3	2.38	0.40	TCMT 11 02 04-UF	★	☆	☆	TCMT 2(1.5)1-UF		
	.407	.094	.016							
	9.9	2.38	0.79	TCMT 11 02 08-UF	★	☆	★	TCMT 2(1.5)2-UF		
	.391	.094	.031							
	16 3/8	15.7	3.97	0.79	TCMT 16 T3 08-UF	★	☆	★	TCMT 3(2.5)2-UF	
	.618	.156	.031							
半精加工	WM	11 1/4	9.9	3.18	0.79	TCMX 11 03 08-WM	☆	★	☆	TCMX 222-WM
			.391	.125	.031					
		16 3/8	15.7	3.97	0.79	TCMX 16 T3 08-WM	☆	★	☆	TCMX 3(2.5)2-WM
		.618	.156	.031						
	PM	09 7/32	9.0	2.38	0.40	TCMT 09 02 04-PM	☆	★	★	TCMT 1.8(1.5)1-PM
			.353	.094	.016					
			8.6	2.38	0.79	TCMT 09 02 08-PM	☆	★	★	TCMT 1.8(1.5)2-PM
			.337	.094	.031					
		11 1/4	10.3	3.18	0.40	TCMT 11 03 04-PM	☆	★	★	TCMT 221-PM
			.407	.125	.016					
			9.9	3.18	0.79	TCMT 11 03 08-PM	☆	★	★	TCMT 222-PM
			.391	.125	.031					
			9.5	3.18	1.19	TCMT 11 03 12-PM	☆	★	★	TCMT 223-PM
			.376	.125	.047					
		16 3/8	16.1	3.97	0.40	TCMT 16 T3 04-PM	☆	★	★	TCMT 3(2.5)1-PM
			.634	.156	.016					
			15.7	3.97	0.79	TCMT 16 T3 08-PM	☆	★	★	TCMT 3(2.5)2-PM
			.618	.156	.031					
	15.3	3.97	1.19	TCMT 16 T3 12-PM	☆	★	★	TCMT 3(2.5)3-PM		
	.602	.156	.047							
	22 1/2	21.2	4.76	0.79	TCMT 22 04 08-PM		★	★	TCMT 432-PM	
	.835	.188	.031							

R= 右手型, L= 左手型



用于车削的 CoroTurn® 107 刀片

T型刀片 (三角形)



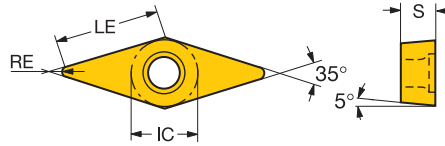
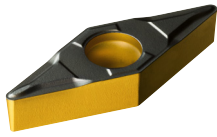
	LE	S	RE	ISO 代码	P			K			ANSI 代码
					4415	4425	4415	4425	4415	4425	
半精加工 UM	09 7/32	9.0	2.38	0.40	TCMT 09 02 04-UM	☆	★	☆	★	TCMT 1.8(1.5)1-UM	
						.353	.094	.016			
						8.6	2.38	0.79	TCMT 09 02 08-UM		☆
	11 1/4	10.3	2.38	0.40	TCMT 11 02 04-UM	☆	★	☆	★	TCMT 2(1.5)1-UM	
						.407	.094	.016			
						9.9	2.38	0.79	TCMT 11 02 08-UM		☆
	16 3/8	16.1	3.97	0.40	TCMT 16 T3 04-UM	☆	★	☆	★	TCMT 3(2.5)1-UM	
						.634	.156	.016			
						15.7	3.97	0.79	TCMT 16 T3 08-UM		☆
粗加工 PR	11 1/4	9.9	3.18	0.79	TCMT 11 03 08-PR	☆	★	☆	★	TCMT 222-PR	
						.391	.125	.031			
						9.5	3.18	1.19	TCMT 11 03 12-PR		☆
	16 3/8	15.7	3.97	0.79	TCMT 16 T3 08-PR	☆	★	☆	★	TCMT 3(2.5)2-PR	
						.618	.156	.031			
						15.3	3.97	1.19	TCMT 16 T3 12-PR		☆
	22 1/2	21.2	4.76	0.79	TCMT 22 04 08-PR	☆	★	☆	★	TCMT 432-PR	
						.835	.188	.031			
						20.8	4.76	1.19	TCMT 22 04 12-PR		☆
11 1/4	10.3	2.38	0.40	TCMT 11 02 04-UR	☆	★	☆	★	TCMT 2(1.5)1-UR		
					.407	.094	.016				
					9.9	2.38	0.79	TCMT 11 02 08-UR		☆	★
16 3/8	16.1	3.97	0.40	TCMT 16 T3 04-UR	☆	★	☆	★	TCMT 3(2.5)1-UR		
					.634	.156	.016				
					15.7	3.97	0.79	TCMT 16 T3 08-UR		☆	★
15.3	3.97	1.19	0.79	TCMT 16 T3 12-UR	☆	★	☆	★	TCMT 3(2.5)3-UR		
					.618	.156	.031				
					.602	.156	.047				

R= 右手型, L= 左手型



用于车削的 CoroTurn® 107 刀片

V型刀片 (菱形 35°)



		LE	S	RE	ISO 代码	P		T		S	ANSI 代码			
						4415	4425	4415	4425	S205				
精加工	PF	11	1/4	10.7	3.18	0.40	★	☆	☆	★	VCMT 11 03 04-PF	VCMT 221-PF		
				.420	.125	.016						VBMT 11 03 02-PF	VBMT 220-PF	
				10.9	3.18	0.20		★		★		VBMT 11 03 04-PF	VBMT 221-PF	
				.428	.125	.008						VBMT 11 03 08-PF	VBMT 222-PF	
				10.7	3.18	0.40	★	☆	☆	★		VBMT 11 03 12-PF	VBMT 223-PF	
				.420	.125	.016								
		16	3/8	16.2	4.76	0.40	★	☆	☆	★		VBMT 16 04 04-PF	VBMT 331-PF	
				.638	.188	.016						VBMT 16 04 08-PF	VBMT 332-PF	
				15.8	4.76	0.79	★	☆	☆	★		VBMT 16 04 12-PF	VBMT 333-PF	
				.622	.188	.031								
				15.4	4.76	1.19	★		★					
				.607	.188	.047								
半精加工	UF	11	1/4	10.9	2.38	0.20		★		☆	VBMT 11 02 02-UF	VBMT 2(1.5)0-UF		
					.428	.094	.008						VBMT 11 02 04-UF	VBMT 2(1.5)1-UF
					10.7	2.38	0.40	★	☆	☆	☆		VBMT 11 02 08-UF	VBMT 2(1.5)2-UF
		.420	.094	.016										
		10.3	2.38	0.79			☆		☆					
		.404	.094	.031										
粗加工	PM	16	3/8	16.2	4.76	0.40	☆	★	☆	★	VBMT 16 04 04-PM	VBMT 331-PM		
					.638	.188	.016						VBMT 16 04 08-PM	VBMT 332-PM
					15.8	4.76	0.79	☆	★	☆	★		VBMT 16 04 12-PM	VBMT 333-PM
			.622	.188	.031									
			15.4	4.76	1.19	☆	★	☆	★					
			.607	.188	.047									
		11	1/4	10.7	3.18	0.40	☆	★	☆	★		VCMT 11 03 04-PM	VCMT 221-PM	
				.420	.125	.016						VCMT 11 03 08-PM	VCMT 222-PM	
				10.3	3.18	0.79	☆	★	☆	★				
		.404	.125	.031										
	粗加工	UM	16	3/8	16.2	4.76	0.40				★	VBGT 16 04 04-UM	VBGT 331-UM	
						.638	.188	.016					★	VBGT 16 04 08-UM
					15.8	4.76	0.79							
		.622	.188	.031										
		16	3/8	16.2	4.76	0.40	☆	★	☆	☆		VBMT 16 04 04-UM	VBMT 331-UM	
				.638	.188	.016						VBMT 16 04 08-UM	VBMT 332-UM	
	15.8			4.76	0.79	☆	★	☆	☆		VBMT 16 04 12-UM	VBMT 333-UM		
	.622	.188	.031											
	15.4	4.76	1.19		★		★							
	.607	.188	.047											
粗加工	PR	16	3/8	15.8	4.76	0.79	☆	★	☆	★	VBMT 16 04 08-PR	VBMT 332-PR		
					.622	.188	.031						VBMT 16 04 12-PR	VBMT 333-PR
		15.4	4.76	1.19	☆	★	☆	★						
		.607	.188	.047										
	UR	16	3/8	16.2	4.76	0.40	☆	★	☆	☆		VBMT 16 04 04-UR	VBMT 331-UR	
					.638	.188	.016						VBMT 16 04 08-UR	VBMT 332-UR
					15.8	4.76	0.79	☆	★	☆	☆		VBMT 16 04 12-UR	VBMT 333-UR
					.622	.188	.031							
	15.4	4.76	1.19	☆	★	☆	☆							
	.607	.188	.047											

B

C

D



12



76

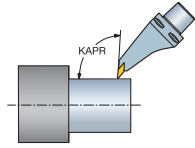
CoroTurn® 107 切削单元

螺钉夹紧型

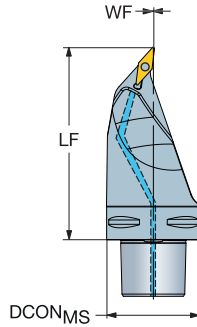
可乐满 Capto® - 带高精度冷却



KAPR
PSIR



Cx-SVMBR/L..C
93.0°
-3.0°



B



- VBMT, VBGT
VCGX,
VCGT, VCET
- VBMW, VCMW

						尺寸, mm, inch								
				CZC _{MS}	RMPX	CNSC	订货号	DCON _{MS}	LF	WF	BAR PSI	NM	KG	MIID
	16	3/8	C6	50°	3	C6-SVMBR/L-00130-16C	63	130.0	0.0	150	3.0	2.10	VBMT 16 04 08	
							2.480	5.118	.000	2175				
			C8	50°	3	C8-SVMBR/L-00160-16C	80	160.0	0.0	150	3.0	4.25	VBMT 16 04 08	
								2.480	6.299	.000	2175			

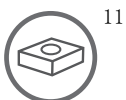
R= 右手型, L= 左手型

C

备件				
刀片螺钉	刀垫	刀垫螺钉	喷嘴	冷却液螺塞
5513 020-01	5322 270-01	5512 090-01	5691 026-03	3213 010-256

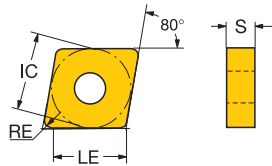
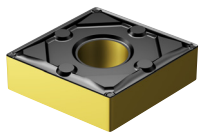
如需了解更多备件 www.sandvik.coromant.com

D



用于车削的 T-Max® P 刀片

C型刀片 (菱形 80°)



		LE	S	RE	ISO 代码	P		K		S		ANSI 代码	
						4415	4425	4415	4425	S206			
精加工	WF	09 3/8	8.9	3.18	0.79	CNMG 09 03 08-WF	★		☆			CNMG 322-WF	
			.349	.125	.031								
	SF	12 1/2	8.5	4.76	0.40	CNMG 12 04 04-SF						★	CNMG431-SF
			.335	.188	.016								
			8.5	4.76	0.79	CNMG 12 04 08-SF						★	CNMG432-SF
	.335	.188	.031										
		8.5	4.76	1.19	CNMG 12 04 12-SF						★	CNMG433-SF	
		.335	.188	.047									
半精加工	WM	16 5/8	15.3	6.35	0.79	CNMG 16 06 08-WM			★	☆			CNMG 542-WM
			.603	.250	.031								
	QM	12 1/2	12.1	4.76	0.79	CNMG 12 04 08-QM						★	CNMG 432-QM
			.476	.188	.031								
			11.7	4.76	1.19	CNMG 12 04 12-QM						★	CNMG 433-QM
		.460	.188	.047									
		19 3/4	18.9	6.35	0.40	CNMG 19 06 04-QM			★	★			CNMG 641-QM
		.746	.250	.016									
	SM	12 1/2	8.5	4.76	0.40	CNMG 12 04 04-SM						★	CNMG431-SM
			.335	.188	.016								
		8.5	4.76	0.79	CNMG 12 04 08-SM						★	CNMG432-SM	
		.335	.188	.031									
		8.5	4.76	1.19	CNMG 12 04 12-SM						★	CNMG433-SM	
		.335	.188	.047									
粗加工	PR	16 5/8	15.3	6.35	0.79	CNMG 16 06 08-PR			★	★			CNMG 542-PR
			.603	.250	.031								
	QR	16 5/8	15.3	6.35	0.79	CNMM 16 06 08-QR			★	★			CNMM 542-QR
			.603	.250	.031								
		19 3/4	18.5	6.35	0.79	CNMM 19 06 08-QR			★	★			CNMM 642-QR
	.730	.250	.031										
XMR	16 5/8	14.9	6.35	1.19	CNMG 16 06 12-XMR	☆	★	☆	★			CNMG 543-XMR	
	.587	.250	.047										

B

C

D



22



76

A

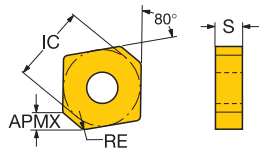
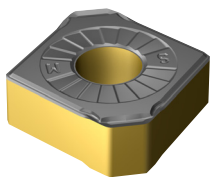
普通车削

刀片

用于车削的 T-Max® P 刀片

C 型刀片 (菱形 80°)

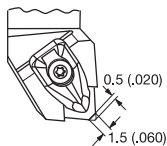
高进给槽形



B

								S	
								S	
								S	
粗加工		LE	S	RE	KCH	CHW	ISO 代码	ANSI 代码	
	12 1/2	2.4 4.76	0.8 50°	1.5	CNMX 12 04 A1-SM	★	CNMX 43A1-SM		
		.094 .188	.031 50°	.059					
		3.8 4.76	0.8 50°	2.5	CNMX 12 04 A2-SM	★	CNMX 43A2-SM		
		.150 .188	.031 50°	.098					

使用 CNMX 刀片时，需要修改刀杆。



刀垫

5322 234-07——用于 T-Max P 杠杆夹紧型刀杆

5322 234-08——用于 CoroTurn RC 刀杆

D



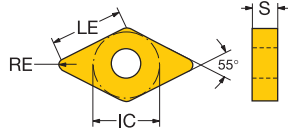
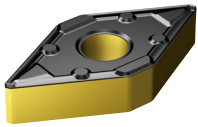
23



76

用于车削的 T-Max® P 刀片

D型刀片 (菱形 55°)



		LE	S	RE	ISO 代码	P		T		S	ANSI 代码	
						4415	4425	4415	4425	S205		
精加工	WF	15	1/2	14.3	4.76	1.19	★		☆		DNMX 433-WF	
				.563	.188	.047						
		11	3/8	11.2	4.76	0.40	★				DNMG 331-LC	
	LC			.442	.188	.016						
		15	1/2	15.1	6.35	0.40	★				DNMG 441-LC	
			.595	.250	.016							
	K	15	1/2	15.1	4.76	0.40		☆		★		DNMG 431-L-K
				.595	.188	.016						
				14.7	4.76	0.79		☆		★		DNMG 432-L-K
			.579	.188	.031							
	XF	15	1/2	14.7	4.76	0.79		☆		★		DNMG 432-XF
			.579	.188	.031							
	SF	15	1/2	6.4	4.76	0.40					★	DNMG431-SF
				.252	.188	.016						
				6.4	4.76	0.79					★	DNMG432-SF
				.252	.188	.031						
				6.4	6.35	0.40					★	DNMG441-SF
				.252	.250	.016						
			6.4	6.35	0.79					★	DNMG442-SF	
			.252	.250	.031							
		6.4	6.35	1.19					★	DNMG443-SF		
		.252	.250	.047								
半精加工	WM	15	1/2	13.9	4.76	1.59		☆		☆		DNMX 434-WM
				.547	.188	.063						
	WMX	15	1/2	13.9	4.76	1.59		★		☆		DNMX 434-WMX
				.547	.188	.063						
	QM	11	3/8	11.2	4.76	0.40		★		★		DNMG 331-QM
				.442	.188	.016						
				10.8	4.76	0.79		★		★		DNMG 332-QM
				.426	.188	.031						
		15	1/2	14.7	6.35	0.79					★	DNMG 442-QM
			.579	.250	.031							
			14.3	6.35	1.19					★	DNMG 443-QM	
			.563	.250	.047							
	SM	15	1/2	6.4	4.76	0.40					★	DNMG431-SM
				.252	.188	.016						
				6.4	4.76	0.79					★	DNMG432-SM
				.252	.188	.031						
				6.4	4.76	1.19					★	DNMG433-SM
				.252	.188	.047						
			6.4	6.35	0.40					★	DNMG441-SM	
			.252	.250	.016							
		6.4	6.35	0.79					★	DNMG442-SM		
		.252	.250	.031								
		6.4	6.35	1.19					★	DNMG443-SM		
		.252	.250	.047								
XM	15	1/2	14.7	4.76	0.79		★		★		DNMG 432-XM	
			.579	.188	.031							
		15.1	6.35	0.40		★		★		DNMG 441-XM		
		.595	.250	.016								
粗加工	PR	19	5/8	18.2	6.35	1.19		★		★		DNMG 543-PR
				.716	.250	.047						
	QR	15	1/2	14.3	4.76	1.19		★		★		DNMM 433-QR
				.563	.188	.047						
		13.9	6.35	1.59		★		★		DNMM 444-QR		
		.547	.250	.063								

B

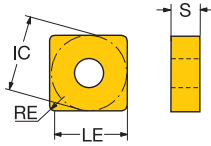
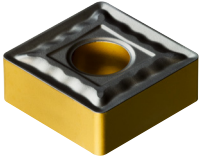
C

D



用于车削的 T-Max® P 刀片

S 型刀片 (正方形)

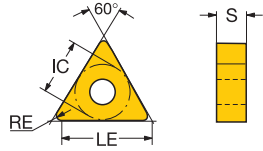
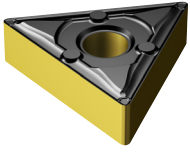


		LE	S	RE	ISO 代码	P			K			ANSI 代码
						4415	4425	4415	4425	4415	4425	
半精加工	QM	09 3/8	9.1	3.18	0.40	SNMG 09 03 04-QM		★		★		SNMG 321-QM
			.359	.125	.016							
		12 1/2	12.3	4.76	0.40	SNMG 12 04 04-QM		★		★		SNMG 431-QM
			.484	.188	.016							
			11.1	4.76	1.59	SNMG 12 04 16-QM		★		☆		SNMG 434-QM
			.437	.188	.063							
		15 5/8	15.1	6.35	0.79	SNMG 15 06 08-QM		★		★		SNMG 542-QM
			.594	.250	.031							
			14.7	6.35	1.19	SNMG 15 06 12-QM		★		☆		SNMG 543-QM
		.578	.250	.047								
		14.3	6.35	1.59	SNMG 15 06 16-QM		★		★		SNMG 544-QM	
		.562	.250	.063								
	19 3/4	18.3	6.35	0.79	SNMG 19 06 08-QM		★		★		SNMG 642-QM	
		.719	.250	.031								
		17.9	6.35	1.19	SNMG 19 06 12-QM	☆	★	☆	☆		SNMG 643-QM	
		.703	.250	.047								
		17.5	6.35	1.59	SNMG 19 06 16-QM		★		☆		SNMG 644-QM	
		.687	.250	.063								
粗加工	XM	12 1/2	11.9	4.76	0.79	SNMG 12 04 08-XM		★		★		SNMG 432-XM
			.469	.188	.031							
	PR	19 3/4	18.3	6.35	0.79	SNMG 19 06 08-PR		★		★		SNMG 642-PR
			.719	.250	.031							
			17.9	6.35	1.19	SNMG 19 06 12-PR	☆	★	☆	★		SNMG 643-PR
			.703	.250	.047							
			17.5	6.35	1.59	SNMG 19 06 16-PR	☆	★	☆	★		SNMG 644-PR
		.687	.250	.063								
		16.7	6.35	2.38	SNMG 19 06 24-PR	☆	★	☆	★		SNMG 646-PR	
		.656	.250	.094								
	QR	12 1/2	11.9	4.76	0.79	SNMM 12 04 08-QR		★		★		SNMM 432-QR
			.469	.188	.031							
			11.5	4.76	1.19	SNMM 12 04 12-QR		★		★		SNMM 433-QR
			.453	.188	.047							
			11.1	4.76	1.59	SNMM 12 04 16-QR		★		★		SNMM 434-QR
			.437	.188	.063							
		15 5/8	14.7	6.35	1.19	SNMM 15 06 12-QR		★		★		SNMM 543-QR
			.578	.250	.047							
		14.3	6.35	1.59	SNMM 15 06 16-QR		★		★		SNMM 544-QR	
		.562	.250	.063								
		13.5	6.35	2.38	SNMM 15 06 24-QR		★		★		SNMM 546-QR	
	.531	.250	.094									
19 3/4	18.3	6.35	0.79	SNMM 19 06 08-QR		★		★		SNMM 642-QR		
	.719	.250	.031									
	16.7	6.35	2.38	SNMM 19 06 24-QR		★		★		SNMM 646-QR		
	.656	.250	.094									



用于车削的 T-Max® P 刀片

T 型刀片 (三角形)



		LE	S	RE	ISO 代码	P		T		ANSI 代码											
						4415	4425	4415	4425												
精加工	PF	16	3/8	16.1	4.76	0.40	★	☆	★	★	TNMG 16 04 04-PF	★	☆	★	★	TNMG 331-PF					
				.634	.188	.016															
				15.7	4.76	0.79							★	☆	★	★	TNMG 332-PF				
				.618	.188	.031															
				15.3	4.76	1.19							★	☆	★	★	TNMG 333-PF				
				.602	.188	.047															
		22	1/2	21.2	4.76	0.79						★	☆	★	★	TNMG 432-PF					
															★	☆	★	★	TNMG 433-PF		
																.835	.188	.031			
												20.8	4.76	1.19							
												.819	.188	.047							
		LC	16	3/8	16.1	4.76	0.40					★	☆				TNMG 331-LC				
																	15.7	4.76	0.79		
												.618	.188	.031							
		K	16	3/8	16.1	4.76	0.40					★	☆	★	★	TNMG 331L-K					
																	15.7	4.76	0.79		
											.618	.188	.031								
	WF	16	3/8	16.1	4.76	0.40					★	☆	★	★	TNMX 331-WF						
																15.7	4.76	0.79			
											.618	.188	.031								
	XF	16	3/8	16.1	4.76	0.40					★	☆	★	★	TNMG 331-XF						
																15.7	4.76	0.79			
											.618	.188	.031								
半精加工	WM	16	3/8	15.7	4.76	0.79					☆	★	☆	☆	TNMX 332-WM						
																15.3	4.76	1.19			
											.602	.188	.047								
		WMX	16	3/8	15.7	4.76	0.79					☆	★	☆	☆	TNMX 332-WMX					
																15.3	4.76	1.19			
											.602	.188	.047								
		PM	22	1/2	21.6	4.76	0.40					☆	★	☆	★	TNMG 431-PM					
																	21.2	4.76	0.79		
																	.835	.188	.031		
																20.8	4.76	1.19			
										.819	.188	.047									
											20.4	4.76	1.59								
											.803	.188	.063								

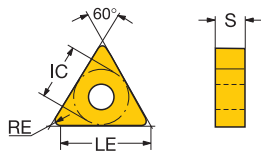
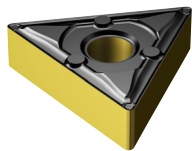
B

C

D

用于车削的 T-Max® P 刀片

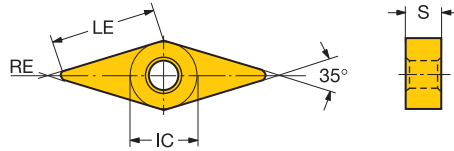
T 型刀片 (三角形)



		LE	S	RE	ISO 代码	P		K		ANSI 代码				
						4415	4425	4415	4425					
半精加工	QM	11	1/4	10.6	3.18	0.40	☆	☆	☆	☆	TNMG 11 03 04-QM	TNMG 221-QM		
				.417	.125	.016								
				10.2	3.18	0.79	☆	☆	☆	☆	TNMG 11 03 08-QM	TNMG 222-QM		
				.402	.125	.031								
			16	3/8	16.1	3.18	0.40		☆		☆	TNMG 16 03 04-QM	TNMG 321-QM	
					.634	.125	.016							
				15.7	3.18	0.79		☆		☆	TNMG 16 03 08-QM	TNMG 322-QM		
				.618	.125	.031								
				16.1	4.76	0.40	☆	☆	☆	☆	TNMG 16 04 04-QM	TNMG 331-QM		
				.634	.188	.016								
			15.7	4.76	0.79	☆	☆	☆	☆	TNMG 16 04 08-QM	TNMG 332-QM			
			.618	.188	.031									
	粗加工	QR	22	1/2	21.6	4.76	0.40		☆		☆	TNMG 22 04 04-QM	TNMG 431-QM	
					.850	.188	.016							
					21.2	4.76	0.79	☆	☆	☆	☆	TNMG 22 04 08-QM	TNMG 432-QM	
					.835	.188	.031							
					20.8	4.76	1.19	☆	☆	☆	☆	TNMG 22 04 12-QM	TNMG 433-QM	
					.819	.188	.047							
		20.4	4.76	1.59	☆	☆	☆	☆	TNMG 22 04 16-QM	TNMG 434-QM				
		.803	.188	.063										
粗加工	XR	16	3/8	15.7	4.76	0.79	☆	☆	☆	☆	TNMG 16 04 08-XMR	TNMG 332-XMR		
				.618	.188	.031								
				22	1/2	21.2	4.76	0.79	☆	☆	☆	☆	TNMG 22 04 08-PR	TNMG 432-PR
				.835	.188	.031								
				20.8	4.76	1.19	☆	☆	☆	☆	TNMG 22 04 12-PR	TNMG 433-PR		
				.819	.188	.047								
		20.4	4.76	1.59	☆	☆	☆	☆	TNMG 22 04 16-PR	TNMG 434-PR				
		.803	.188	.063										
粗加工	PR	16	3/8	15.7	4.76	0.79	☆	☆	☆	☆	TNMM 16 04 08-PR	TNMM 332-PR		
				.618	.188	.031								
				15.3	4.76	1.19	☆	☆	☆	☆	TNMM 16 04 12-PR	TNMM 333-PR		
				.602	.188	.047								
				22	1/2	21.2	4.76	0.79	☆	☆	☆	☆	TNMM 22 04 08-PR	TNMM 432-PR
				.835	.188	.031								
			20.8	4.76	1.19	☆	☆	☆	☆	TNMM 22 04 12-PR	TNMM 433-PR			
			.819	.188	.047									
	粗加工	QR	16	3/8	15.7	4.76	0.79	☆	☆	☆	☆	TNMM 16 04 08-QR	TNMM 332-QR	
					.618	.188	.031							
					15.3	4.76	1.19		☆		☆	TNMM 16 04 12-QR	TNMM 333-QR	
					.602	.188	.047							
				22	1/2	21.2	4.76	0.79		☆		☆	TNMM 22 04 08-QR	TNMM 432-QR
				.835	.188	.031								
		20.8	4.76	1.19	☆	☆	☆	☆	TNMM 22 04 12-QR	TNMM 433-QR				
		.819	.188	.047										
		20.4	4.76	1.59		☆		☆	TNMM 22 04 16-QR	TNMM 434-QR				
		.803	.188	.063										

用于车削的 T-Max® P 刀片

V型刀片 (菱形 35°)

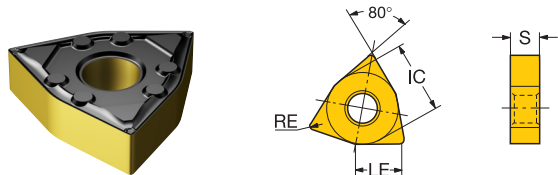


		LE	S	RE	ISO 代码	P			S			ANSI 代码							
						415	425	415	425	415	425								
精加工	PF	16	3/8	16.2	4.76	0.40	★	☆	☆	★			VNMG 16 04 04-PF	★	☆	☆	★	VNMG 331-PF	
				.638	.188	.016													
				15.8	4.76	0.79	★	☆	☆	★				VNMG 16 04 08-PF	★	☆	☆	★	VNMG 332-PF
				.622	.188	.031													
				16	3/8	16.2	4.76	0.40	★	☆				VNMG 16 04 04-LC	★	☆			VNMG 331-LC
				.638	.188	.016													
		LC			15.8	4.76	0.79	★	☆				VNMG 16 04 08-LC	★	☆			VNMG 332-LC	
				.622	.188	.031													
				16	3/8	16.2	4.76	0.40						VNMG 16 04 04-SF				★	VNMG331-SF
				.638	.188	.016													
						15.8	4.76	0.79						VNMG 16 04 08-SF				★	VNMG332-SF
				.622	.188	.031													
	SF			15.4	4.76	1.19						VNMG 16 04 12-SF				★	VNMG333-SF		
			.607	.188	.047														
		PM	16	3/8	15.8	4.76	0.79	☆	★	☆	★		VNMG 16 04 08-PM	☆	★	☆	★	VNMG 332-PM	
				.622	.188	.031													
				15.4	4.76	1.19	☆	★	☆	★			VNMG 16 04 12-PM	☆	★	☆	★	VNMG 333-PM	
			.607	.188	.047														
	QM	16	3/8	16.2	4.76	0.40	☆	★	☆	☆		VNMG 16 04 04-QM	☆	★	☆	☆	VNMG 331-QM		
			.638	.188	.016														
			15.8	4.76	0.79	☆	★	☆				VNMG 16 04 08-QM	☆	★	☆		VNMG 332-QM		
			.622	.188	.031														
			15.4	4.76	1.19		★		★			VNMG 16 04 12-QM		★		★	VNMG 333-QM		
			.606	.187	.047														
	SM	16	3/8	15.8	4.76	0.79						VNMG 16 04 08-SM				★	VNMG332-SM		
			.622	.188	.031														
			15.4	4.76	1.19							VNMG 16 04 12-SM				★	VNMG333-SM		
		.607	.188	.047															



用于车削的 T-Max® P 刀片

W 型刀片 (凸三角形 80°)



B

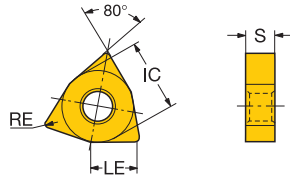
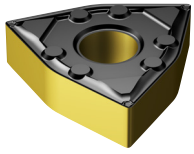
	LE	S	RE	ISO 代码	P				ANSI 代码
					4415	4425	4415	4425	
精加工	WF	06 3/8	6.1 4.76 0.40	WNMG 06 04 04-WF	★	☆	☆	☆	WNMG 331-WF
				WNMG 06 04 08-WF	★	☆	☆	☆	WNMG 332-WF
				WNMG 08 04 04-WF	★	☆	☆	☆	WNMG 431-WF
		08 1/2	8.3 4.76 0.40	WNMG 08 04 08-WF	★	☆	☆	☆	WNMG 432-WF
				WNMG 08 04 12-WF	★	☆	☆	☆	WNMG 433-WF
				WNMG 06 04 04-PF	★	☆	☆	★	WNMG 331-PF
	PF	06 3/8	6.1 4.76 0.40	WNMG 06 04 08-PF	★	☆	☆	★	WNMG 332-PF
				WNMG 06 04 12-PF	★	☆	☆	★	WNMG 333-PF
				WNMG 08 04 04-PF	★	☆	☆	★	WNMG 431-PF
		08 1/2	8.3 4.76 0.40	WNMG 08 04 08-PF	★	☆	☆	★	WNMG 432-PF
				WNMG 08 04 12-PF	★	☆	☆	★	WNMG 433-PF
				WNMG 06 04 04-LC	★	☆			WNMG 331-LC
LC	06 3/8	6.1 4.76 0.40	WNMG 06 04 08-LC	★	☆			WNMG 332-LC	
			WNMG 08 04 08-LC	★	☆			WNMG 432-LC	
			WNMG 06 04 08-WL	★				WNMG 332-WL	
WL	06 3/8	5.7 4.76 0.79	WNMG 08 04 08-WL	★	☆			WNMG 432-WL	
			WNMG 08 04 04-XF		★		★	WNMG 431-XF	
			WNMG 08 04 08-XF		☆		★	WNMG 432-XF	
Medium	WM	06 3/8	5.7 4.76 0.79	WNMG 06 04 08-WM	☆	★	☆	☆	WNMG 332-WM
				WNMG 06 04 12-WM	☆	★	☆	☆	WNMG 333-WM
				WNMG 08 04 08-WM	☆	★	☆	☆	WNMG 432-WM
		08 1/2	7.9 4.76 0.79	WNMG 08 04 12-WM	☆	★	☆	☆	WNMG 433-WM
				WNMG 06 04 08-WMX	☆	★	☆	☆	WNMG 332-WMX
				WNMG 06 04 12-WMX	☆	★	☆	☆	WNMG 333-WMX
	WMX	06 3/8	1.6 4.76 0.79	WNMG 08 04 08-WMX	☆	★	☆	☆	WNMG 432-WMX
				WNMG 08 04 12-WMX	☆	★	☆	☆	WNMG 433-WMX
				WNMG 06 04 08-WMX	☆	★	☆	☆	WNMG 332-WMX
		08 1/2	2.2 4.76 0.79	WNMG 06 04 12-WMX	☆	★	☆	☆	WNMG 333-WMX
				WNMG 08 04 08-WMX	☆	★	☆	☆	WNMG 432-WMX
				WNMG 08 04 12-WMX	☆	★	☆	☆	WNMG 433-WMX

D



用于车削的 T-Max® P 刀片

W 型刀片 (凸三角形 80°)



	LE	S	RE	ISO 代码	P			S			ANSI 代码
					4415	4425	4425	4415	4425	S205	
Medium	PM	06 3/8	5.7 4.76 0.79	WNMG 06 04 08-PM	☆	★	☆	★	☆	★	WNMG 332-PM
				WNMG 06 04 12-PM	☆	★	☆	★	☆	★	WNMG 333-PM
				WNMG 06 04 16-PM	☆	★	☆	★	☆	★	WNMG 334-PM
		08 1/2	7.9 4.76 0.79	WNMG 08 04 08-PM	☆	★	☆	★	☆	★	WNMG 432-PM
				WNMG 08 04 12-PM	☆	★	☆	★	☆	★	WNMG 433-PM
				WNMG 08 04 16-PM	☆	★	☆	★	☆	★	WNMG 434-PM
	QM	06 3/8	5.7 4.76 0.79	WNMG 06 04 08-QM	☆	★	☆	★	☆	★	WNMG 332-QM
				WNMG 06 04 12-QM	☆	★	☆	★	☆	★	WNMG 333-QM
				WNMG 06 04 16-QM	☆	★	☆	★	☆	★	WNMG 334-QM
		08 1/2	8.3 4.76 0.40	WNMG 08 04 04-QM	☆	★	☆	★	☆	★	WNMG 431-QM
				WNMG 08 04 08-QM	☆	★	☆	★	☆	★	WNMG 432-QM
				WNMG 08 04 12-QM	☆	★	☆	★	☆	★	WNMG 433-QM
08 1/2	3.2 4.76 0.40	WNMG 08 04 16-QM	☆	★	☆	★	☆	★	WNMG 434-QM		
		WNMG 08 04 04-SM						★	WNMG431-SM		
		WNMG 08 04 08-SM						★	WNMG432-SM		
SM	3.2 4.76 1.19	WNMG 08 04 12-SM						★	WNMG433-SM		
		06 3/8	5.7 4.76 0.79	WNMG 06 04 08-XM		★			★	WNMG 332-XM	
				08 1/2	7.9 4.76 0.79	WNMG 08 04 08-XM	☆	★	☆	★	WNMG 432-XM
WNMG 08 04 12-XM	☆					★	☆	★	WNMG 433-XM		
粗加工	PR	06 3/8	5.7 4.76 0.79	WNMG 06 04 08-PR	☆	★	☆	★	☆	★	WNMG 332-PR
				WNMG 06 04 12-PR	☆	★	☆	★	☆	★	WNMG 333-PR
				WNMG 06 04 16-PR	☆	★	☆	★	☆	★	WNMG 334-PR
		08 1/2	7.9 4.76 0.79	WNMG 08 04 08-PR	☆	★	☆	★	☆	★	WNMG 432-PR
				WNMG 08 04 12-PR	☆	★	☆	★	☆	★	WNMG 433-PR
				WNMG 08 04 16-PR	☆	★	☆	★	☆	★	WNMG 434-PR

B

C

D



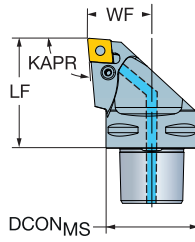
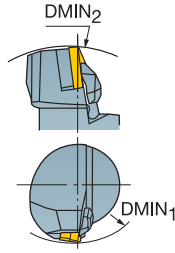
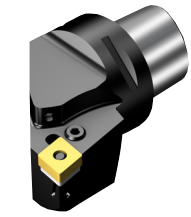
用于车削的 T-Max® P 切削单元

杠杆式夹紧

可乐满 Capto® - 带高精度冷却

Cx-PCLNR/L..C
95.0°
-5.0°

KAPR
PSIR

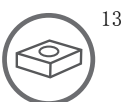


- CNMM
- CNMG
- CNMA, CNGA

	尺寸, mm, inch						尺寸, mm, inch							
	CZC _{MS}	DMIN ₁	DMIN ₂	CNSC	订货号	DCON _{MS}	LF	WF	BAR PSI	NM	KG	MIID		
	12	1/2	C3	109.0	140.0	3	C3-PCLNR/L-22045-12C	32	40.0	22.0	150	5.0	0.24	CNG 12 04 08
				4.291	5.512			1.260	1.575	.866	2175			
			C4	112.0	155.0	3	C4-PCLNR/L-27050-12C	40	50.0	27.0	150	5.0	0.42	CNG 12 04 08
				4.409	6.102			1.575	1.969	1.063	2175			
			C5	113.0	165.0	3	C5-PCLNR/L-35060-12C	50	60.0	35.0	150	5.0	0.76	CNG 12 04 08
				4.449	6.496			1.969	2.362	1.378	2175			
			C6	123.0	220.0	3	C6-PCLNR/L-45065-12C	63	65.0	45.0	150	5.0	1.31	CNG 12 04 08
				4.843	8.661			2.480	2.559	1.772	2175			
			C8	167.0	280.0	3	C8-PCLNR/L-55080-12C	80	80.0	55.0	150	5.0	2.71	CNG 12 04 08
				6.575	11.024			3.150	3.150	2.165	2175			
	16	5/8	C6	140.0	215.0	3	C6-PCLNR/L-45065-16C	63	65.0	45.0	150	5.0	1.34	CNG 16 06 12
				5.512	8.465			2.480	2.559	1.772	2175			
			C8	142.0	280.0	3	C8-PCLNR/L-55080-16C	80	80.0	55.0	150	5.0	2.75	CNG 16 06 12
				5.591	11.024			3.150	3.150	2.165	2175			

R= 右手型, L= 左手型

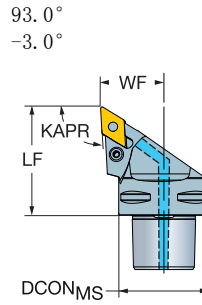
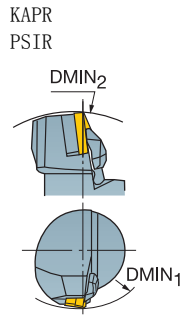
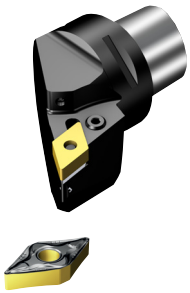
如需了解更多备件 www.sandvik.coromant.com



用于车削的 T-Max® P 切削单元

杠杆式夹紧

可乐满 Capto® - 带高精度冷却

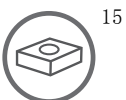


- DNMM, DNMX
- DNMG
- DNMA, DNGA

			CZCIS	DMIN1	DMIN2	RMPX	CNSC	订货号	尺寸, mm, inch						MIID		
									DCONIS	LF	WF	BAR PSI	NM	KG			
	11	3/8	C4	183.0	140.0	27°	3	C4-PDJNR/L-27050-11C	40	50.0	27.0	150	2.0	0.39	DNMG 11 04 08		
				7.205	5.512			1.575	1.969	1.063	2175						
				185.0	165.0	27°	3	C5-PDJNR/L-35060-11C	50	60.0	35.0	150	2.0	0.73	DNMG 11 04 08		
					7.283	6.496			1.969	2.362	1.378	2175					
	15	1/2	C4	138.0	145.0	27°	3	C4-PDJNR/L-27055-15C	40	55.0	27.0	150	5.0	0.42	DNMG 15 06 08		
				5.433	5.709			1.575	2.165	1.063	2175						
139.0				165.0	27°	3	C5-PDJNR/L-35060-1504C	50	60.0	35.0	150	5.0	0.71	DNMG 15 06 08			
					5.472	6.496			1.969	2.362	1.378	2175					
					139.0	165.0	27°	3	C5-PDJNR/L-35060-15C	50	60.0	35.0	150	5.0	0.71	DNMG 15 06 08	
					5.472	6.496			1.969	2.362	1.378	2175					
	C6	173.0	190.0	27°	3	C6-PDJNR/L-45065-1504C	63	65.0	45.0	150	5.0	1.18	DNMG 15 06 08				
							6.811	7.480			2.480	2.559	1.772	2175			
							63	65.0	45.0	150	5.0	1.18	DNMG 15 06 08				
					173.0	190.0	27°	3	C6-PDJNR/L-45065-15C	63	65.0	45.0	150	5.0	1.18	DNMG 15 06 08	
					6.811	7.480			2.480	2.559	1.772	2175					
					204.0	248.0	27°	3	C8-PDJNR/L-55080-15C	80	65.0	45.0	150	5.0	2.42	DNMG 15 06 08	
				8.032	9.764			2.480	2.559	1.772	2175						

R= 右手型, L= 左手型

如需了解更多备件 www.sandvik.coromant.com



A

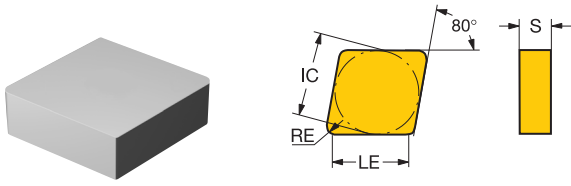
普通车削

刀片

用于车削的 T-Max® 刀片

C型刀片（菱形 80°）

高级切削材料



B

					S		
		IC	LE	S	RE	ISO 代码	ANSI 代码
半精加工	12	1/2	11.7	7.94	1.2	CNGN120712E	☆ CNG453A
			.460	.313	.047		

C

D

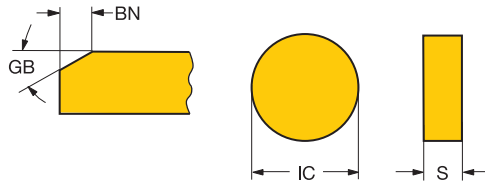
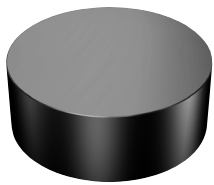


76

用于车削的 T-Max® 刀片

R型刀片（圆形）

高级切削材料



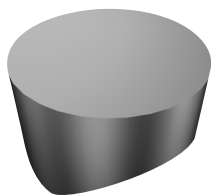
半精加工	IC		S	RE	GB	BN	ISO 代码	6165	ANSI 代码
	12	1/2							
			7.94	6.4	20°	0.10	RNGN120700T01020	☆	RNG45T0320
			.313	.250	20°	.004			
			7.94	6.4			RNGN120700E	☆	RNG45A
			.313	.250					



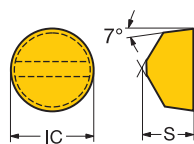
用于车削的 T-Max® 刀片

R型刀片（圆形）

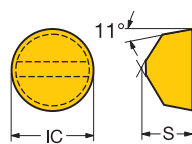
高级切削材料



RCGX..E



RPGX..E



	S		RE		ISO 代码	S	ANSI 代码
	IC	RE	IC	RE			
半精加工	06	1/4	6.35	3.2	RCGX060600E	☆	RCGX24A
			.250	.125			
			4.76	3.2	RPGX060400E	☆	RPGX23A
			.188	.125			
	09	3/8	7.94	4.8	RCGX090700E	☆	RCGX35A
			.313	.188			
		7.94	4.8	RPGX090700E	☆	RPGX35A	
		.313	.188				
12	1/2	7.94	6.4	RCGX120700E	☆	RCGX45A	
		.313	.250				
		7.94	6.4	RPGX120700E	☆	RPGX45A	
		.313	.250				



切断与切槽

CoroCut® 1-2

刀片

CoroCut® 1-2 仿形刀片

28

B

C

D

攻丝

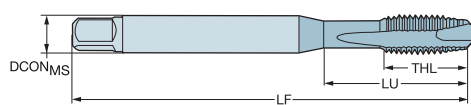
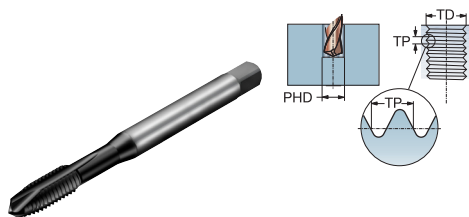
切削丝锥

CoroTap™ 200 螺尖丝锥	30-49
CoroTap™ 300 切削丝锥 (带螺旋槽)	50-74

CoroTap™ 200 螺尖丝锥

螺纹形式：公制

DIN/ANSI

ULDR
SUBSTRATE
COATING3.0
HSS-E-PM
PVD TiAlN

													p		尺寸, mm, inch	
TDZ	TP	LU	CZC _{IS}	THCHT	TCTR	订货号	PPM	DCON _{MS}	TD	LF	THL	NOF	PHD	BSG		
M3	0.50	18.00 .709	.141 x .110	B	6HX	T200-PM100AA-M3	★	3.6 .141	3.00 .118	56.0 2.205	9.0 .354	3	2.5 .098	DIN/ANSI		
M4	0.70	21.00 .827	.168 x .131	B	6HX	T200-PM100AA-M4	★	4.3 .168	4.00 .157	63.0 2.480	13.0 .512	3	3.3 .130	DIN/ANSI		
M5	0.80	27.50 1.083	.194 x .152	B	6HX	T200-PM100AA-M5	★	4.9 .194	5.00 .197	70.0 2.756	14.0 .551	3	4.2 .165	DIN/ANSI		
M6	1.00	26.00 1.024	.255 x .191	B	6HX	T200-PM100AA-M6	★	6.5 .255	6.00 .236	80.0 3.150	15.0 .591	3	5.0 .197	DIN/ANSI		
M8	1.25	33.50 1.319	.697 x .523	B	6HX	T200-PM100AA-M8	★	8.1 .318	8.00 .315	90.0 3.543	18.0 .709	3	6.8 .268	DIN/ANSI		
M10	1.50	38.00 1.496	.800 x .600	B	6HX	T200-PM100AA-M10	★	9.7 .381	10.00 .394	100.0 3.937	20.0 .787	3	8.5 .335	DIN/ANSI		



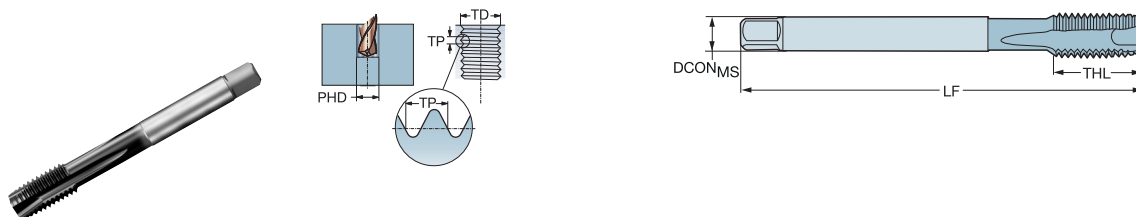
CoroTap™ 200 螺尖丝锥

螺纹形式：公制

DIN/ANSI

ULDR
SUBSTRATE
COATING

3.0
HSS-E-PM
PVD TiAlN



											P		尺寸, mm, inch			
TDZ	TP	LJ	CZ _{MS}	THCHT	TCTR	订货号	PPM	DCON _{MS}	TD	LF	THL	NOF	PHD	BSG		
M12	1.75	55.00	.367 x .275	B	6HX	T200-PM101AA-M12	★	9.3	12.00	110.0	23.0	4	10.3	DIN/ANSI		
		2.165						.367	.472	4.331	.906		.406			
M14	2.00	60.00	.429 x .322	B	6HX	T200-PM101AA-M14	★	10.9	14.00	110.0	23.0	4	12.0	DIN/ANSI		
		2.362						.429	.551	4.331	.906		.472			
M16	2.00	55.00	.480 x .360	B	6HX	T200-PM101AA-M16	★	12.2	16.00	110.0	23.0	4	14.0	DIN/ANSI		
		2.165						.480	.630	4.331	.906		.551			
M18	2.50	72.00	.542 x .406	B	6HX	T200-PM101AA-M18	★	13.8	18.00	125.0	30.0	4	15.5	DIN/ANSI		
		2.835						.542	.709	4.921	1.181		.610			
M20	2.50	72.00	.652 x .489	B	6HX	T200-PM101AA-M20	★	16.6	20.00	140.0	30.0	4	17.5	DIN/ANSI		
		2.835						.652	.787	5.512	1.181		.689			
M24	3.00	86.00	.760 x .570	B	6HX	T200-PM101AA-M24	★	19.3	24.00	160.0	36.0	4	21.0	DIN/ANSI		
		3.386						.760	.945	6.299	1.417		.827			



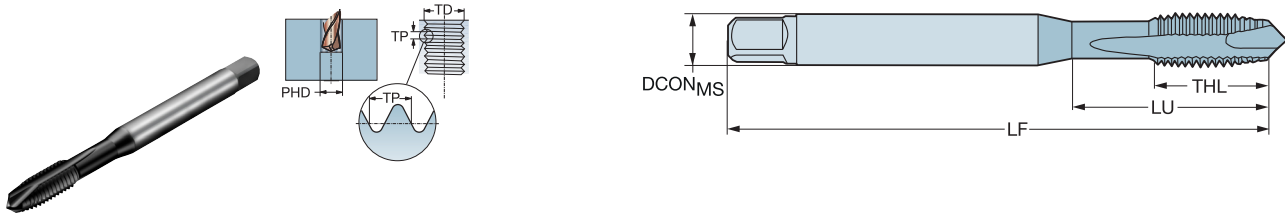
CoroTap™ 200 螺尖丝锥

螺纹形式: 公制

DIN 371

ULDR
SUBSTRATE
COATING

3.0
HSS-E-PM
PVD TIALN



B

											p		尺寸, mm, inch	
TDZ	TP	LU	CZC _{MS}	THCHT	TCR	订货号	PPM	DCON _{MS}	TD	LF	THL	NOF	PHD	BSG
M1	0.25	6.00	2.50 x 2.10	B	5HX	T200-PM100DA-M1	★	2.5	1.00	40.0	5.0	2	0.8	DIN 371
		.236						.098	.039	1.575	.197		.030	
M1.2	0.25	6.00	2.50 x 2.10	B	5HX	T200-PM100DA-M1.2	★	2.5	1.20	40.0	5.0	2	1.0	DIN 371
		.236						.098	.047	1.575	.197		.037	
M1.4	0.30	7.70	2.50 x 2.10	B	5HX	T200-PM100DA-M1.4	★	2.5	1.40	40.0	6.5	2	1.1	DIN 371
		.303						.098	.055	1.575	.256		.043	
M1.6	0.35	8.30	2.50 x 2.10	B	6HX	T200-PM100DA-M1.6	★	2.5	1.60	40.0	7.0	2	1.3	DIN 371
		.327						.098	.063	1.575	.276		.049	
M1.8	0.35	8.40	2.50 x 2.10	B	6HX	T200-PM100DA-M1.8	★	2.5	1.80	40.0	7.0	2	1.5	DIN 371
		.331						.098	.071	1.575	.276		.057	
M2	0.40	9.00	2.80 x 2.10	B	6HX	T200-PM100DA-M2	★	2.8	2.00	45.0	6.0	2	1.6	DIN 371
		.354						.110	.079	1.772	.236		.063	
M2.2	0.45	12.00	2.80 x 2.10	B	6HX	T200-PM100DA-M2.2	★	2.8	2.20	45.0	7.0	2	1.8	DIN 371
		.472						.110	.087	1.772	.276		.069	
M2.3	0.40	12.00	2.80 x 2.10	B	6HX	T200-PM100DA-M2.3	★	2.8	2.30	45.0	7.0	2	1.9	DIN 371
		.472						.110	.091	1.772	.276		.073	
M2.5	0.45	12.50	2.80 x 2.10	B	6HX	T200-PM100DA-M2.5	★	2.8	2.50	50.0	8.0	2	2.1	DIN 371
		.492						.110	.098	1.969	.315		.081	
M3	0.50	18.00	3.50 x 2.70	B	6HX	T200-PM100DA-M3	★	3.5	3.00	56.0	9.0	3	2.5	DIN 371
		.709						.138	.118	2.205	.354		.098	
M3.5	0.60	20.00	4.00 x 3.00	B	6HX	T200-PM100DA-M3.5	★	4.0	3.50	56.0	11.0	3	2.9	DIN 371
		.787						.157	.138	2.205	.433		.114	
M4	0.70	21.00	4.50 x 3.40	B	6HX	T200-PM100DA-M4	★	4.5	4.00	63.0	12.0	3	3.3	DIN 371
		.827						.177	.157	2.480	.472		.130	
M5	0.80	25.00	6.00 x 4.90	B	6HX	T200-PM100DA-M5	★	6.0	5.00	70.0	13.0	3	4.2	DIN 371
		.984						.236	.197	2.756	.512		.165	
M6	1.00	31.00	6.00 x 4.90	B	6HX	T200-PM100DA-M6	★	6.0	6.00	80.0	15.0	3	5.0	DIN 371
		1.220						.236	.236	3.150	.591		.197	
M7	1.00	31.00	7.00 x 5.50	B	6HX	T200-PM100DA-M7	★	9.3	7.00	80.0	15.0	3	6.0	DIN 371
		1.220						.367	.276	3.150	.591		.236	
M8	1.25	35.00	8.00 x 6.20	B	6HX	T200-PM100DA-M8	★	10.9	8.00	90.0	18.0	3	6.8	DIN 371
		1.378						.429	.315	3.543	.709		.268	
M10	1.50	39.00	10.00 x 8.00	B	6HX	T200-PM100DA-M10	★	7.0	10.00	100.0	20.0	3	8.5	DIN 371
		1.535						.276	.394	3.937	.787		.335	

D



76

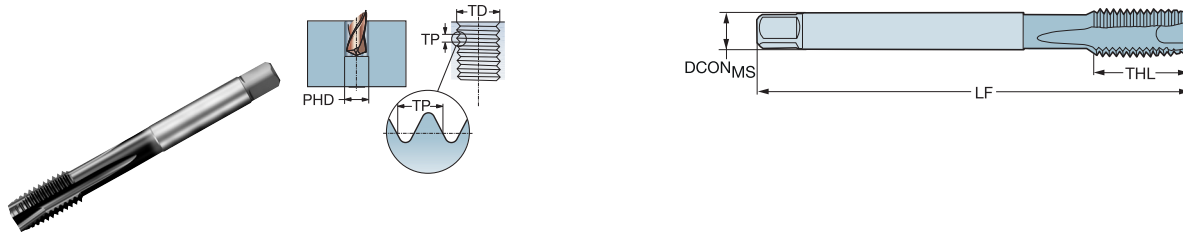
CoroTap™ 200 螺尖丝锥

螺纹形式：公制

DIN 376

ULDR
SUBSTRATE
COATING

3.0
HSS-E-PM
PVD TIALN



TDZ	TP	LU	CZC ₆	THCHT	TCTR	订货号	尺寸, mm, inch							
							PHD	NOF	THL	LF	TD	DCON _{MS}	PM	BSG
M4	0.70	31.50	2.80 x 2.10	B	6HX	T200-PM101DA-M4	★	2.8	4.00	63.0	12.0	3	3.3	DIN 376
		1.240						.110	.157	2.480	.472		.130	
M5	0.80	35.00	3.50 x 2.70	B	6HX	T200-PM101DA-M5	★	3.5	5.00	70.0	13.0	3	4.2	DIN 376
		1.378						.138	.197	2.756	.512		.165	
M6	1.00	40.00	4.50 x 3.40	B	6HX	T200-PM101DA-M6	★	4.5	6.00	80.0	15.0	3	5.0	DIN 376
		1.575						.177	.236	3.150	.591		.197	
M8	1.25	43.00	6.00 x 4.90	B	6HX	T200-PM101DA-M8	★	6.0	8.00	90.0	18.0	3	6.8	DIN 376
		1.693						.236	.315	3.543	.709		.268	
M10	1.50	48.00	7.00 x 5.50	B	6HX	T200-PM101DA-M10	★	7.0	10.00	100.0	20.0	3	8.5	DIN 376
		1.890						.276	.394	3.937	.787		.335	
M12	1.75	55.00	6.00 x 4.90	B	6HX	T200-PM101DA-M12	★	9.0	12.00	110.0	23.0	4	10.3	DIN 376
		2.165						.354	.472	4.331	.906		.406	
M14	2.00	60.00	11.00 x 9.00	B	6HX	T200-PM101DA-M14	★	11.0	14.00	110.0	25.0	4	12.0	DIN 376
		2.362						.433	.551	4.331	.984		.472	
M16	2.00	60.00	12.00 x 9.00	B	6HX	T200-PM101DA-M16	★	12.0	16.00	110.0	25.0	4	14.0	DIN 376
		2.362						.472	.630	4.331	.984		.551	
M18	2.50	72.00	14.00 x 11.00	B	6HX	T200-PM101DA-M18	★	14.0	18.00	125.0	30.0	4	15.5	DIN 376
		2.835						.551	.709	4.921	1.181		.610	
M20	2.50	72.00	16.00 x 12.00	B	6HX	T200-PM101DA-M20	★	16.0	20.00	140.0	30.0	4	17.5	DIN 376
		2.835						.630	.787	5.512	1.181		.689	
M22	2.50	82.00	18.00 x 14.50	B	6HX	T200-PM101DA-M22	★	18.0	22.00	140.0	34.0	4	19.5	DIN 376
		3.228						.709	.866	5.512	1.339		.768	
M24	3.00	91.00	18.00 x 14.50	B	6HX	T200-PM101DA-M24	★	18.0	24.00	160.0	38.0	4	21.0	DIN 376
		3.583						.709	.945	6.299	1.496		.827	
M27	3.00	91.00	20.00 x 16.00	B	6HX	T200-PM101DA-M27	★	20.0	27.00	160.0	38.0	4	24.0	DIN 376
		3.583						.787	1.063	6.299	1.496		.945	
M30	3.50	108.00	22.00 x 18.00	B	6HX	T200-PM101DA-M30	★	22.0	30.00	180.0	45.0	4	26.5	DIN 376
		4.252						.866	1.181	7.087	1.772		1.043	

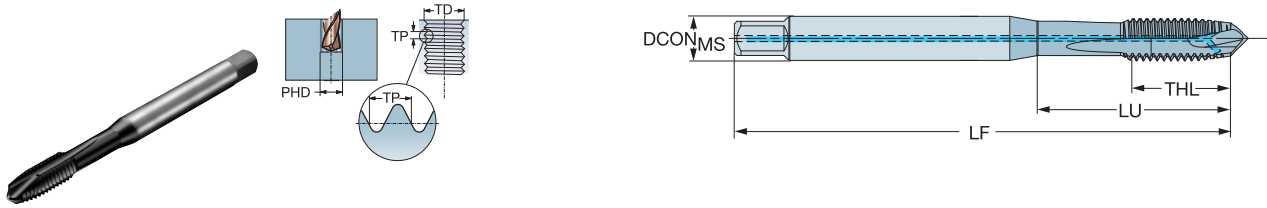


CoroTap™ 200 螺尖丝锥

螺纹形式：公制

DIN 371

ULDR 3.0
 CNCS 1
 CXSC 2
 SUBSTRATE HSS-E-PM
 COATING PVD TIALN



B

		p		尺寸, mm, inch										
TDZ	TP	LU	CZC _{MS}	THCHT	TCTR	订货号	PPM	DCON _{MS}	TD	LF	THL	NOF	PHD	BSG
M4	0.70	21.00	4.50 x 3.40	B	6HX	T200-PM108DA-M4	★	4.5	4.00	63.0	12.0	3	3.3	DIN 371
		.827						.177	.157	2.480	.472		.130	
M5	0.80	25.00	6.00 x 4.90	B	6HX	T200-PM108DA-M5	★	6.0	5.00	70.0	13.0	3	4.2	DIN 371
		.984						.236	.197	2.756	.512		.165	
M6	1.00	31.00	6.00 x 4.90	B	6HX	T200-PM108DA-M6	★	6.0	6.00	80.0	15.0	3	5.0	DIN 371
		1.220						.236	.236	3.150	.591		.197	
M8	1.25	35.00	8.00 x 6.20	B	6HX	T200-PM108DA-M8	★	8.0	8.00	90.0	17.5	3	6.8	DIN 371
		1.378						.315	.315	3.543	.689		.268	
M10	1.50	39.00	10.00 x 8.00	B	6HX	T200-PM108DA-M10	★	10.0	10.00	100.0	20.0	3	8.5	DIN 371
		1.535						.394	.394	3.937	.787		.335	

C

D

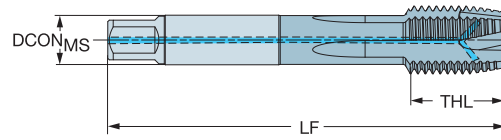
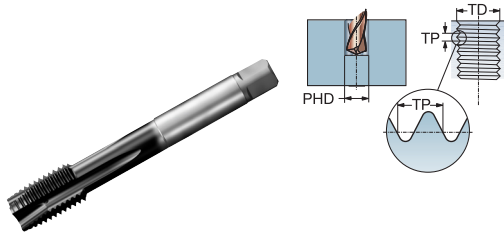


CoroTap™ 200 螺尖丝锥

螺纹形式：公制

DIN 376

ULDR 3.0
 CNSC 1
 CXSC 2
 SUBSTRATE HSS-E-PM
 COATING PVD TiAlN



										p 尺寸, mm, inch				
TDZ	TP	LU	CZC ₆	THCHT	TCTR	订货号	材料	DCON ₆	TD	LF	THL	NOF	PHD	BSG
M12	1.75	55.00	9.00 x 7.00	B	6HX	T200-PM109DA-M12	★	9.0	12.00	110.0	23.0	4	10.3	DIN 376
		2.165						.354	.472	4.331	.906		.406	
M14	2.00	60.00	11.00 x 9.00	B	6HX	T200-PM109DA-M14	★	11.0	14.00	110.0	25.0	4	12.0	DIN 376
		2.362						.433	.551	4.331	.984		.472	
M16	2.00	60.00	12.00 x 9.00	B	6HX	T200-PM109DA-M16	★	12.0	16.00	110.0	25.0	4	14.0	DIN 376
		2.362						.472	.630	4.331	.984		.551	
M18	2.50	72.00	14.00 x 11.00	B	6HX	T200-PM109DA-M18	★	14.0	18.00	125.0	30.0	4	15.5	DIN 376
		2.835						.551	.709	4.921	1.181		.610	
M20	2.50	72.00	16.00 x 12.00	B	6HX	T200-PM109DA-M20	★	16.0	20.00	140.0	30.0	4	17.5	DIN 376
		2.835						.630	.787	5.512	1.181		.689	
M22	2.50	82.00	18.00 x 14.50	B	6HX	T200-PM109DA-M22	★	18.0	22.00	140.0	34.0	4	19.5	DIN 376
		3.228						.709	.866	5.512	1.339		.768	
M24	3.00	91.00	18.00 x 14.50	B	6HX	T200-PM109DA-M24	★	18.0	24.00	160.0	38.0	4	21.0	DIN 376
		3.583						.709	.945	6.299	1.496		.827	
M30	3.50	108.00	22.00 x 18.00	B	6HX	T200-PM109DA-M30	★	22.0	30.00	180.0	45.0	4	26.5	DIN 376
		4.252						.866	1.181	7.087	1.772		1.043	



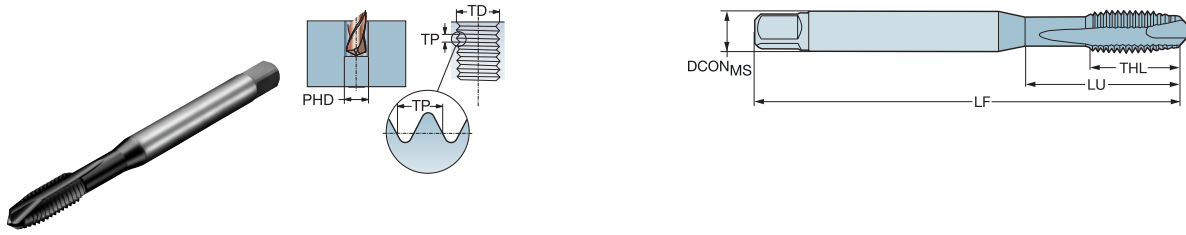
CoroTap™ 200 螺尖丝锥

螺纹形式：公制

JIS-B-4430

ULDR
SUBSTRATE
COATING

3.0
HSS-E-PM
PVD TIALN



B

		p		尺寸, mm, inch										
		P												
TDZ	TP	LU	CZC _{MS}	THCHT	TCTR	订货号	PM	DCON _{MS}	TD	LF	THL	NOF	PHD	BSG
M3	0.50	18.00	4.00 x 3.20	B	6HX	T200-PM100JA-M3	★	4.0	3.00	46.0	9.0	3	2.5	JISB4430
		.709						.157	.118	1.811	.354		.098	
M4	0.70	21.00	5.00 x 4.00	B	6HX	T200-PM100JA-M4	★	5.0	4.00	52.0	12.0	3	3.3	JISB4430
		.827						.197	.157	2.047	.472		.130	
M5	0.80	25.00	5.50 x 4.50	B	6HX	T200-PM100JA-M5	★	5.5	5.00	60.0	13.0	3	4.2	JISB4430
		.984						.217	.197	2.362	.512		.165	
M6	1.00	30.00	6.00 x 4.50	B	6HX	T200-PM100JA-M6	★	6.0	6.00	62.0	15.0	3	5.0	JISB4430
		1.181						.236	.236	2.441	.591		.197	

C

D



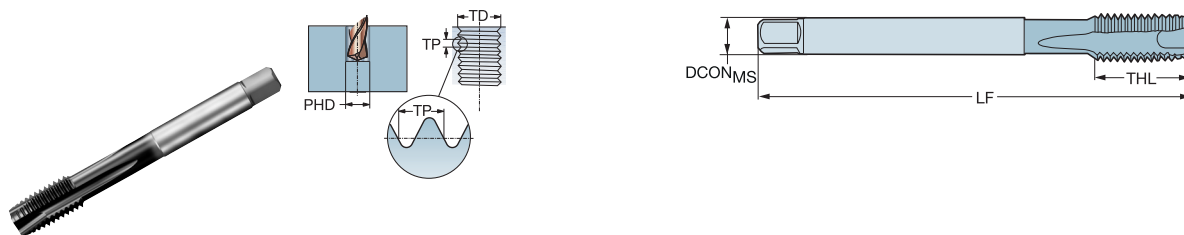
CoroTap™ 200 螺尖丝锥

螺纹形式：公制

JIS-B-4430

ULDR
SUBSTRATE
COATING

3.0
HSS-E-PM
PVD TIALN



										p 尺寸, mm, inch				
TDZ	TP	LU	CZC ₆	THCHT	TCTR	订货号	PM	DCON ₆	TD	LF	THL	NOF	PHD	BSG
M8	1.25	35.00	6.20 x 5.00	B	6HX	T200-PM101JA-M8	★	6.2	8.00	70.0	18.0	3	6.8	JISB4430
		1.378						.244	.315	2.756	.709		.266	
M10	1.50	37.50	7.00 x 5.50	B	6HX	T200-PM101JA-M10	★	7.0	10.00	75.0	20.0	3	8.5	JISB4430
		1.476						.276	.394	2.953	.787		.335	
M12	1.75	41.00	8.50 x 6.50	B	6HX	T200-PM101JA-M12	★	8.5	12.00	82.0	23.0	4	10.3	JISB4430
		1.614						.335	.472	3.228	.906		.406	
M16	2.00	53.00	12.50 x 10.00	B	6HX	T200-PM101JA-M16	★	12.5	16.00	95.0	25.0	4	14.0	JISB4430
		2.087						.492	.630	3.740	.984		.551	
M18	2.50	50.00	14.00 x 11.00	B	6HX	T200-PM101JA-M18	★	14.0	18.00	100.0	30.0	4	15.5	JISB4430
		1.969						.551	.709	3.937	1.181		.610	
M20	2.50	52.50	15.00 x 12.00	B	6HX	T200-PM101JA-M20	★	15.0	20.00	105.0	30.0	4	17.5	JISB4430
		2.067						.591	.787	4.134	1.181		.689	
M24	3.00	60.00	19.00 x 15.00	B	6HX	T200-PM101JA-M24	★	19.0	24.00	120.0	36.0	4	21.0	JISB4430
		2.362						.748	.945	4.724	1.417		.827	



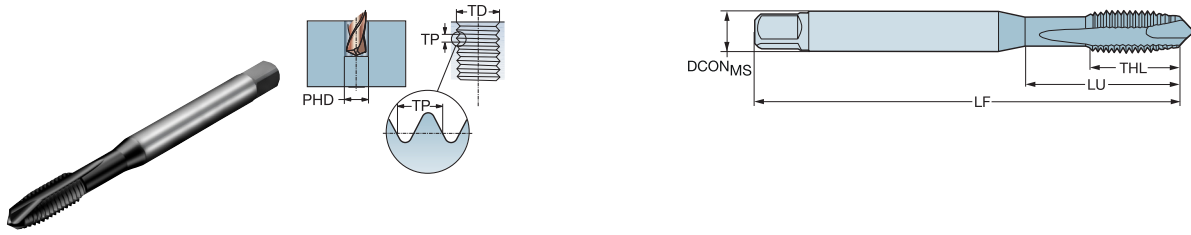
CoroTap™ 200 螺尖丝锥

螺纹形式：公制细牙

JIS-B-4436

ULDR
SUBSTRATE
COATING

3.0
HSS-E-PM
PVD TIALN



B

		p		尺寸, mm, inch										
		P												
TDZ	TP	LU	CZC _{MS}	THCHT	TCTR	订货号	DCON _{MS}	TD	LF	THL	NOF	PHD	BSG	
MF4X0.5	0.50	21.00	5.00 x 4.00	B	6HX	T200-PM100JB-M4X050	★	5.0	4.00	52.0	12.0	3	3.5	JISB4436
		.827						.197	.157	2.047	.472		.138	
MF5X0.5	0.50	25.00	5.50 x 4.50	B	6HX	T200-PM100JB-M5X050	★	5.5	5.00	52.0	13.0	3	4.5	JISB4436
		.984						.217	.197	2.047	.512		.177	
MF6X0.5	0.50	30.00	6.00 x 4.50	B	6HX	T200-PM100JB-M6X050	★	6.0	6.00	62.0	15.0	3	5.5	JISB4436
		1.181						.236	.236	2.441	.591		.217	
MF6X0.75	0.75	30.00	6.00 x 4.50	B	6HX	T200-PM100JB-M6X075	★	6.0	6.00	62.0	15.0	3	5.3	JISB4436
		1.181						.236	.236	2.441	.591		.207	

C

D



76

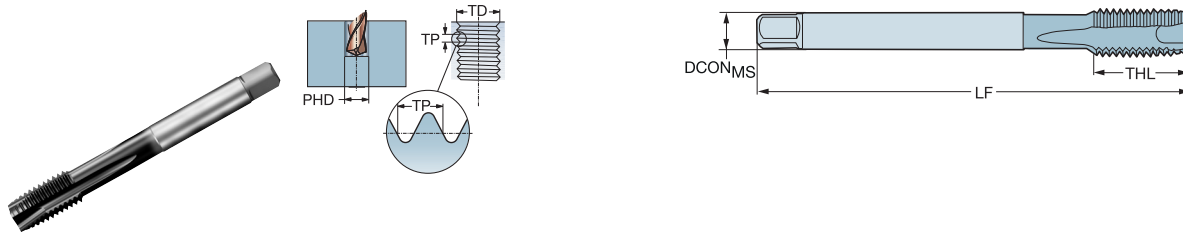
CoroTap™ 200 螺尖丝锥

螺纹形式：公制细牙

JIS-B-4436

ULDR
SUBSTRATE
COATING

3.0
HSS-E-PM
PVD TIALN



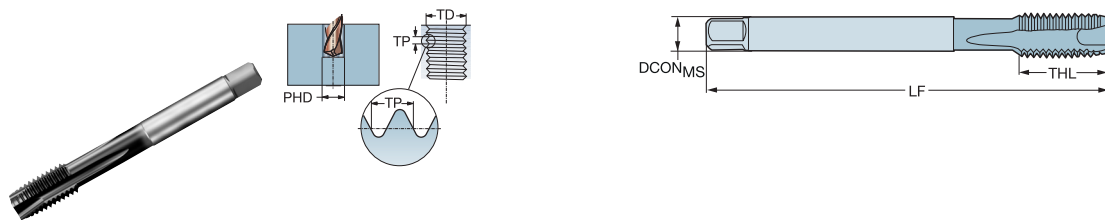
							p		尺寸, mm, inch						
TDZ	TP	LU	CZC ₆	THCHT	TCTR	订货号	PM	DCON ₆	TD	LF	THL	NOF	PHD	BSG	
MF8X1	1.00	35.00	6.20 x 5.00	B	6HX	T200-PM101JB-M8X100	★	6.2	8.00	70.0	18.0	3	7.0	JISB4436	
		1.378						.244	.315	2.756	.709		.276		
MF10X1	1.00	39.00	7.00 x 5.50	B	6HX	T200-PM101JB-M10X100	★	7.0	10.00	70.0	20.0	3	9.0	JISB4436	
		1.535						.276	.394	2.756	.787		.354		
MF10X1.25	1.25	37.50	7.00 x 5.50	B	6HX	T200-PM101JB-M10X125	★	7.0	10.00	75.0	20.0	3	8.8	JISB4436	
		1.476						.276	.394	2.953	.787		.344		
MF12X1	1.00	35.00	8.50 x 6.50	B	6HX	T200-PM101JB-M12X100	★	8.5	12.00	70.0	21.0	4	11.0	JISB4436	
		1.378						.335	.472	2.756	.827		.433		
MF12X1.25	1.25	40.00	8.50 x 6.50	B	6HX	T200-PM101JB-M12X125	★	8.5	12.00	80.0	21.0	4	10.8	JISB4436	
		1.575						.335	.472	3.150	.827		.425		
MF12X1.5	1.50	40.00	8.50 x 6.50	B	6HX	T200-PM101JB-M12X150	★	8.5	12.00	82.0	21.0	4	10.5	JISB4436	
		1.575						.335	.472	3.228	.827		.413		
MF14X1.5	1.50	49.00	10.50 x 8.00	B	6HX	T200-PM101JB-M14X150	★	10.5	14.00	88.0	49.0	4	12.5	JISB4436	
		1.929						.413	.551	3.465	1.929		.492		
MF16X1.5	1.50	47.50	12.50 x 10.00	B	6HX	T200-PM101JB-M16X150	★	12.5	16.00	95.0	21.0	4	14.5	JISB4436	
		1.870						.492	.630	3.740	.827		.571		
MF18X1.5	1.50	47.50	14.00 x 11.00	B	6HX	T200-PM101JB-M18X150	★	14.0	18.00	95.0	24.0	4	16.5	JISB4436	
		1.870						.551	.709	3.740	.945		.650		
MF20X1.5	1.50	47.50	15.00 x 12.00	B	6HX	T200-PM101JB-M20X150	★	15.0	20.00	95.0	24.0	4	18.5	JISB4436	
		1.870						.591	.787	3.740	.945		.728		



CoroTap™ 200 螺尖丝锥

螺纹形式：公制细牙

DIN 374

ULDR
SUBSTRATE
COATING3.0
HSS-E-PM
PVD TiAlN

											p		尺寸, mm, inch	
TDZ	TP	LJ	CZC _{MS}	THCHT	TCTR	订货号	PPM	DCON _{MS}	TD	LF	THL	NOF	PHD	BSG
MF4x0.5	0.50	31.50	2.80 x 2.10	B	6HX	T200-PM101DA-M4X050	★	2.8	4.00	63.0	12.0	3	3.5	DIN 374
		1.240						.110	.157	2.480	.472		.138	
MF5x0.5	0.50	35.00	3.50 x 2.70	B	6HX	T200-PM101DA-M5X050	★	3.5	5.00	70.0	13.0	3	4.5	DIN 374
		1.378						.138	.197	2.756	.512		.177	
MF6x0.75	0.75	40.00	4.50 x 3.40	B	6HX	T200-PM101DA-M6X075	★	4.5	6.00	80.0	15.0	3	5.3	DIN 374
		1.575						.177	.236	3.150	.591		.209	



76

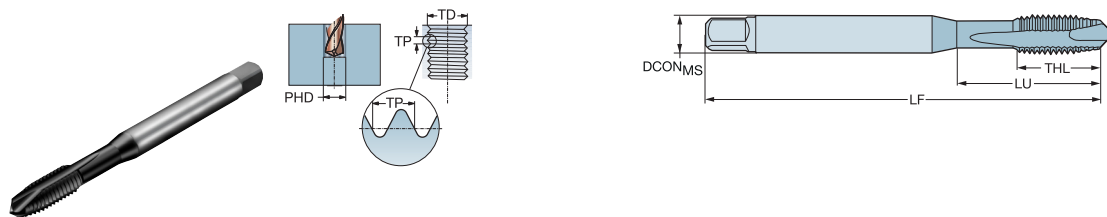
CoroTap™ 200 螺尖丝锥

螺纹形式：公制细牙

DIN/ANSI

ULDR
SUBSTRATE
COATING

3.0
HSS-E-PM
PVD TiAlN



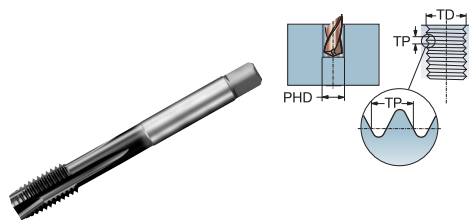
										P		尺寸, mm, inch			
TDZ	TP	LU	CZ _{MS}	THCHT	TCTR	订货号	P/PM	DCON _{MS}	TD	LF	THL	NOF	PHD	BSG	
MF8x1	1.00	33.50 L.319	.318 x .238	B	6HX	T200-PM100AB-M8X100	★	8.1 .318	8.00 .315	90.0 3.543	18.0 .709	3	7.0	DIN/ANSI	
MF10x1.25	1.25	38.00 L.496	.381 x .286	B	6HX	T200-PM100AB-M10X125	★	9.7 .381	10.00 .394	100.0 3.937	20.0 .787	3	8.8	DIN/ANSI	



CoroTap™ 200 螺尖丝锥

螺纹形式：公制细牙

DIN/ANSI

ULDR
SUBSTRATE
COATING3.0
HSS-E-PM
PVD TiAlN

											p		尺寸, mm, inch	
TDZ	TP	LJ	CZ _{MS}	THCHT	TCTR	订货号	PPM	DCON _{MS}	TD	LF	THL	NOF	PHD	BSG
MF12x1.25	1.25	55.00	.318 x .238	B	6HX	T200-PM101AB-M12X125	★	9.3	12.00	110.0	23.0	4	10.8	DIN/ANSI
		2.165						.367	.472	4.331	.906		.425	
MF12x1.5	1.50	55.00	.381 x .286	B	6HX	T200-PM101AB-M12X150	★	9.3	12.00	110.0	23.0	4	10.5	DIN/ANSI
		2.165						.367	.472	4.331	.906		.413	
MF14x1.5	1.50	55.00	.367 x .275	B	6HX	T200-PM101AB-M14X150	★	10.9	14.00	110.0	23.0	4	12.5	DIN/ANSI
		2.165						.429	.551	4.331	.906		.492	
MF16x1.5	1.50	55.00	.367 x .275	B	6HX	T200-PM101AB-M16X150	★	12.2	16.00	110.0	23.0	4	14.5	DIN/ANSI
		2.165						.480	.630	4.331	.906		.571	
MF18x1.5	1.50	72.00	.542 x .406	B	6HX	T200-PM101AB-M18X150	★	13.8	18.00	125.0	30.0	4	16.5	DIN/ANSI
		2.835						.542	.709	4.921	1.181		.650	



76

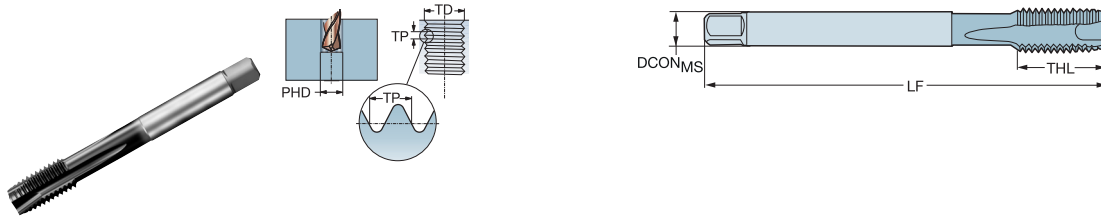
CoroTap™ 200 螺尖丝锥

螺纹形式：公制细牙

DIN 374

ULDR
SUBSTRATE
COATING

3.0
HSS-E-PM
PVD TiAlN



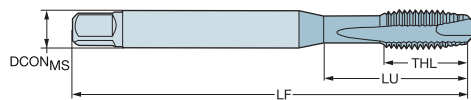
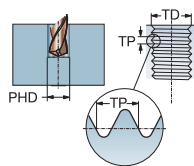
							尺寸, mm, inch									
TDZ	TP	LJ	CZ _{MS}	THCHT	TCTR	订货号	P	DCON _{MS}	TD	LF	THL	NOF	PHD	BSG		
MF8x0.75	0.75	40.00	6.00 x 4.90	B	6HX	T200-PM101DB-M8X075	★	6.0	8.00	80.0	15.0	3	7.3	DIN 374		
		1.575						.236	.315	3.150	.591		.287			
MF8x1	1.00	33.50	6.00 x 4.90	B	6HX	T200-PM101DB-M8X100	★	6.0	8.00	90.0	18.0	3	7.0	DIN 374		
		1.319						.236	.315	3.543	.709		.276			
MF10x1	1.00	45.00	7.00 x 5.50	B	6HX	T200-PM101DB-M10X100	★	7.0	10.00	90.0	18.0	3	9.0	DIN 374		
		1.772						.276	.394	3.543	.709		.354			
MF10x1.25	1.25	48.00	7.00 x 5.50	B	6HX	T200-PM101DB-M10X125	★	7.0	10.00	100.0	19.8	3	8.8	DIN 374		
		1.890						.276	.394	3.937	.780		.346			
MF12x1	1.00	50.00	9.00 x 7.00	B	6HX	T200-PM101DB-M12X100	★	9.0	12.00	100.0	21.0	4	11.0	DIN 374		
		1.969						.354	.472	3.937	.827		.433			
MF12x1.25	1.25	50.00	9.00 x 7.00	B	6HX	T200-PM101DB-M12X125	★	9.0	12.00	100.0	21.0	4	10.8	DIN 374		
		1.969						.354	.472	3.937	.827		.425			
MF12x1.5	1.50	50.00	9.00 x 7.00	B	6HX	T200-PM101DB-M12X150	★	9.0	12.00	100.0	21.0	4	10.5	DIN 374		
		1.969						.354	.472	3.937	.827		.413			
MF14x1	1.00	50.00	11.00 x 9.00	B	6HX	T200-PM101DB-M14X100	★	11.0	14.00	100.0	21.0	4	13.0	DIN 374		
		1.969						.433	.551	3.937	.827		.512			
MF14x1.25	1.25	50.00	11.00 x 9.00	B	6HX	T200-PM101DB-M14X125	★	11.0	14.00	100.0	21.0	4	12.8	DIN 374		
		1.969						.433	.551	3.937	.827		.504			
MF14x1.5	1.50	50.00	11.00 x 9.00	B	6HX	T200-PM101DB-M14X150	★	11.0	14.00	100.0	21.0	4	12.5	DIN 374		
		1.969						.433	.551	3.937	.827		.492			
MF16x1	1.00	50.00	12.00 x 9.00	B	6HX	T200-PM101DB-M16X100	★	12.0	16.00	100.0	21.0	4	15.0	DIN 374		
		1.969						.472	.630	3.937	.827		.591			
MF16x1.5	1.50	50.00	12.00 x 9.00	B	6HX	T200-PM101DB-M16X150	★	12.0	16.00	100.0	21.0	4	14.5	DIN 374		
		1.969						.472	.630	3.937	.827		.571			
MF18x1	1.00	58.00	14.00 x 11.00	B	6HX	T200-PM101DB-M18X100	★	14.0	18.00	110.0	24.0	4	17.0	DIN 374		
		2.283						.551	.709	4.331	.945		.669			
MF18x1.5	1.50	58.00	14.00 x 11.00	B	6HX	T200-PM101DB-M18X150	★	14.0	18.00	110.0	24.0	4	16.5	DIN 374		
		2.283						.551	.709	4.331	.945		.650			
MF20x1	1.00	58.00	16.00 x 12.00	B	6HX	T200-PM101DB-M20X100	★	16.0	20.00	125.0	24.0	4	19.0	DIN 374		
		2.283						.630	.787	4.921	.945		.748			
MF20x1.5	1.50	58.00	16.00 x 12.00	B	6HX	T200-PM101DB-M20X150	★	16.0	20.00	125.0	24.0	4	18.5	DIN 374		
		2.283						.630	.787	4.921	.945		.728			
MF22x1.5	1.50	60.00	18.00 x 14.50	B	6HX	T200-PM101DB-M22X150	★	18.0	22.00	125.0	25.0	4	20.5	DIN 374		
		2.362						.709	.866	4.921	.984		.807			
MF24x1.5	1.50	67.00	18.00 x 14.50	B	6HX	T200-PM101DB-M24X150	★	18.0	24.00	140.0	28.0	4	22.5	DIN 374		
		2.638						.709	.945	5.512	1.102		.886			
MF24x2	2.00	67.00	18.00 x 14.50	B	6HX	T200-PM101DB-M24X200	★	18.0	24.00	140.0	28.0	4	22.0	DIN 374		
		2.638						.709	.945	5.512	1.102		.866			
MF26x1.5	1.50	67.00	18.00 x 14.50	B	6HX	T200-PM101DB-M26X150	★	18.0	26.00	140.0	28.0	4	24.5	DIN 374		
		2.638						.709	1.024	5.512	1.102		.965			
MF27x2	2.00	67.00	20.00 x 16.00	B	6HX	T200-PM101DB-M27X200	★	20.0	27.00	140.0	28.0	4	25.0	DIN 374		
		2.638						.787	1.063	5.512	1.102		.984			
MF28x1.5	1.50	67.00	20.00 x 16.00	B	6HX	T200-PM101DB-M28X150	★	20.0	28.00	140.0	28.0	4	26.5	DIN 374		
		2.638						.787	1.102	5.512	1.102		1.043			
MF30x1.5	1.50	67.00	20.00 x 16.00	B	6HX	T200-PM101DB-M30X150	★	22.0	30.00	150.0	28.0	4	28.5	DIN 374		
		2.638						.866	1.181	5.906	1.102		1.122			
MF30x2	2.00	67.00	22.00 x 18.00	B	6HX	T200-PM101DB-M30X200	★	22.0	30.00	150.0	28.0	4	28.0	DIN 374		
		2.638						.866	1.181	5.906	1.102		1.102			



CoroTap™ 200 螺尖丝锥

螺纹形式: UNC

DIN/ANSI

ULDR
SUBSTRATE
COATING3.0
HSS-E-PM
PVD TiAlN

													p		尺寸, mm, inch			
TDZ	TPI	LU	CZC _{MS}	THCHT	TCTR	订货号	PPM	DCON _{MS}	TD	LF	THL	NOF	PHD	BSG				
UNC2-56	56.00	12.00	.141 x .110	B	3BX	T200-PM100AE-2-56	★	3.6	2.18	45.0	7.0	2	1.9	DIN/ANSI				
		.472						.141	.086	1.772	.276		.073					
UNC4-40	40.00	17.00	.141 x .110	B	2BX	T200-PM100AE-4-40	★	3.6	2.85	56.0	9.0	3	2.4	DIN/ANSI				
		.669						.141	.112	2.205	.354		.093					
UNC6-32	32.00	21.00	.141 x .110	B	2BX	T200-PM100AE-6-32	★	3.6	3.51	56.0	11.0	3	2.9	DIN/ANSI				
		.827						.141	.138	2.205	.433		.112					
UNC8-32	32.00	21.00	.168 x .131	B	2BX	T200-PM100AE-8-32	★	4.3	4.17	63.0	13.0	3	3.5	DIN/ANSI				
		.827						.168	.164	2.480	.512		.138					
UNC10-24	24.00	27.50	.194 x .152	B	3BX	T200-PM100AE-10-24	★	4.9	4.83	70.0	14.0	3	3.9	DIN/ANSI				
		1.083						.194	.190	2.756	.551		.154					
UNC1/4-20	20.00	25.00	.255 x .191	B	3BX	T200-PM100AE-1/4	★	6.5	6.35	80.0	15.0	3	5.1	DIN/ANSI				
		1.319						.480	.313	3.543	.709		.260					
UNC3/8-16	16.00	38.00	.381 x .286	B	3BX	T200-PM100AE-3/8	★	9.7	9.53	100.0	20.0	3	8.0	DIN/ANSI				
		1.496						.381	.375	3.937	.787		.315					
UNC5/16-18	18.00	33.50	.480 x .360	B	3BX	T200-PM100AE-5/16	★	8.1	7.94	90.0	18.0	3	6.6	DIN/ANSI				
		.984						.318	.250	3.150	.591		.201					



76

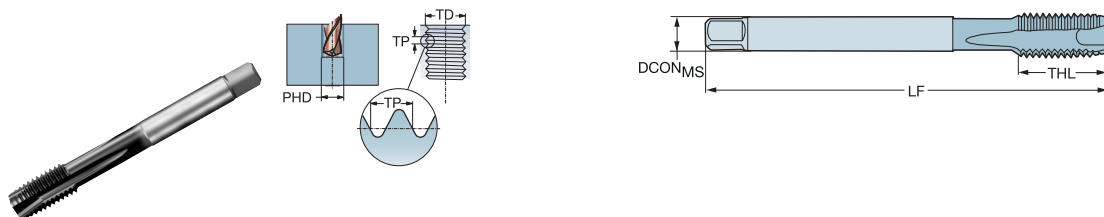
CoroTap™ 200 螺尖丝锥

螺纹形式: UNC

DIN/ANSI

ULDR
SUBSTRATE
COATING

3.0
HSS-E-PM
PVD TiAlN



尺寸, mm, inch														
TDZ	TPI	LJ	CZ _{MS}	THCHT	TCTR	订货号	★	DCON _{MS}	TD	LF	THL	NOF	PHD	BSG
UNC7/16-14	14.00	48.00	.323 x .242	B	2BX	T200-PM101AE-7/16	★	8.2	11.11	100.0	20.0	4	9.4	DIN/ANSI
		1.890						.323	.438	3.937	.787		.370	
UNC1/2-13	13.00	55.00	.367 x .275	B	3BX	T200-PM101AE-1/2	★	9.3	12.70	110.0	23.0	4	10.8	DIN/ANSI
		2.165						.367	.500	4.331	.906		.425	
UNC5/8-11	11.00	55.00	.480 x .360	B	3BX	T200-PM101AE-5/8	★	12.2	15.88	110.0	23.0	4	13.5	DIN/ANSI
		2.165						.480	.625	4.331	.906		.531	
UNC3/4-10	10.00	72.00	.590 x .442	B	3BX	T200-PM101AE-3/4	★	15.0	19.05	125.0	30.0	4	16.5	DIN/ANSI
		2.835						.590	.750	4.921	1.181		.650	
UNC7/8-9	9.00	81.00	.697 x .523	B	3BX	T200-PM101AE-7/8	★	17.7	22.23	140.0	34.0	4	19.5	DIN/ANSI
		3.189						.697	.875	5.512	1.339		.768	
UNC1"-8	8.00	86.00	.800 x .600	B	3BX	T200-PM101AE-1	★	20.3	25.40	160.0	36.0	4	22.3	DIN/ANSI
		3.386						.800	1.000	6.299	1.417		.876	

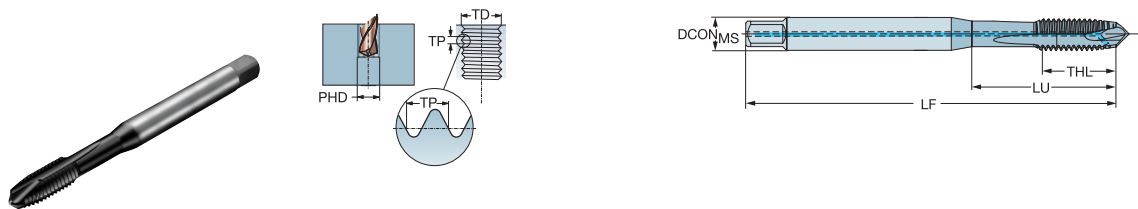


CoroTap™ 200 螺尖丝锥

螺纹形式: UNC

DIN/ANSI

ULDR 3.0
 CNCS 1
 CXSC 2
 SUBSTRATE HSS-E-PM
 COATING PVD TiAlN



		p		尺寸, mm, inch										
TDZ	TPI	LU	CZ _{MS}	THCHT	TCR	订货号	PTPM	DCON _{MS}	TD	LF	THL	NOF	PHD	BSG
UNC1/4-20	20.00	25.00	.255 x .191	B	2BX	T200-PM108AE-1/4	★	6.5	6.35	80.0	15.0	3	5.1	DIN/ANSI
		.984						.255	.250	3.150	.391		.201	
UNC5/16-18	18.00	33.50	.318 x .238	B	2BX	T200-PM108AE-5/16	★	8.1	7.94	90.0	18.0	3	6.6	DIN/ANSI
		1.319						.318	.313	3.543	.709		.260	
UNC3/8-16	16.00	38.00	.381 x .286	B	2BX	T200-PM108AE-3/8	★	9.7	9.53	100.0	20.0	3	8.0	DIN/ANSI
		1.496						.381	.375	3.937	.787		.315	

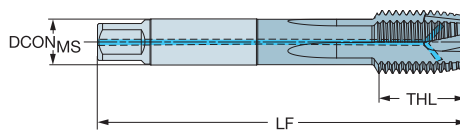
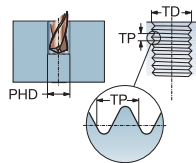


CoroTap™ 200 螺尖丝锥

螺纹形式: UNC

DIN/ANSI

ULDR 3.0
 CNCSC 1
 CXSC 2
 SUBSTRATE HSS-E-PM
 COATING PVD TIALN



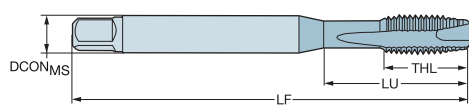
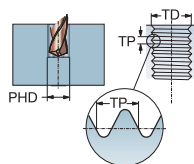
										p		尺寸, mm, inch			
TDZ	TPI	LJ	CZC _{MS}	THCHT	TCTR	订货号	材料	DCON _{MS}	TD	LF	THL	NOF	PHD	BSG	
UNC7/16-14	14.00	48.00	.323 x .242	B	2BX	T200-PM109AE-7/16	★	8.2	11.11	100.0	20.0	4	9.4	DIN/ANSI	
		1.890						.323	.438	3.937	.787		.370		
UNC1/2-13	13.00	55.00	.367 x .275	B	2BX	T200-PM109AE-1/2	★	9.3	12.70	110.0	23.0	4	10.8	DIN/ANSI	
		2.165						.367	.500	4.331	.906		.425		
UNC5/8-11	11.00	55.00	.480 x .360	B	2BX	T200-PM109AE-5/8	★	12.2	15.88	110.0	23.0	4	13.5	DIN/ANSI	
		2.165						.480	.625	4.331	.906		.531		
UNC3/4-10	10.00	72.00	.590 x .442	B	2BX	T200-PM109AE-3/4	★	15.0	19.05	125.0	30.0	4	16.5	DIN/ANSI	
		2.835						.590	.750	4.921	1.181		.650		
UNC7/8-9	9.00	81.00	.697 x .523	B	2BX	T200-PM109AE-7/8	★	17.7	22.23	140.0	34.0	4	19.5	DIN/ANSI	
		3.189						.697	.875	5.512	1.339		.788		
UNC1"-8	8.00	86.00	.800 x .600	B	2BX	T200-PM109AE-1	★	20.3	25.40	160.0	30.0	4	22.3	DIN/ANSI	
		3.386						.800	1.000	6.299	1.181		.876		



CoroTap™ 200 螺尖丝锥

螺纹形式: UNC

DIN/ANSI

ULDR
SUBSTRATE
COATING3.0
HSS-E-PM
PVD TiAlN

		p		尺寸, mm, inch										
TDZ	TPI	LU	CZ _{MS}	THGT	TCTR	订货号	PPM	DCON _{MS}	TD	LF	THL	NOF	PHD	BSG
UNC8-32	32.00	21.00 .827	.168 x .131	B	3BX	T200-PM114AE-8-32	★	4.3 .168	4.17 .164	63.0 2.480	13.0 .512	3	3.5 .138	DIN/ANSI
UNC1/4-20	20.00	25.00 .984	.255 x .191	B	2BX	T200-PM114AE-1/4	★	6.5 .255	6.35 .250	80.0 3.150	15.0 .591	3	5.1 .201	DIN/ANSI
UNC5/16-18	18.00	33.50 1.319	.542 x .406	B	2BX	T200-PM114AE-5/16	★	8.1 .318	7.94 .313	90.0 3.543	18.0 .709	3	6.6 .260	DIN/ANSI
UNC3/8-16	16.00	38.00 1.496	.381 x .286	B	2BX	T200-PM114AE-3/8	★	9.7 .381	9.53 .375	100.0 3.937	20.0 .787	3	8.0 .315	DIN/ANSI



76

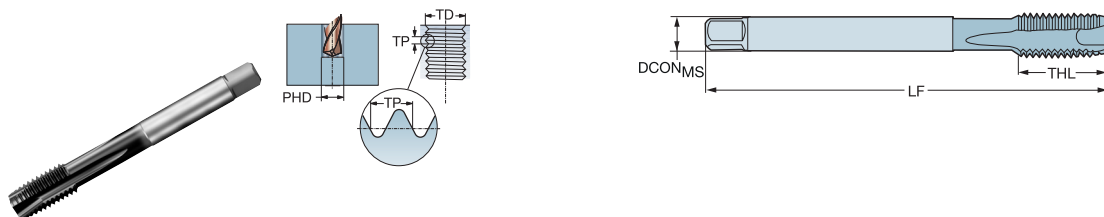
CoroTap™ 200 螺尖丝锥

螺纹形式: UNC

DIN/ANSI

ULDR
SUBSTRATE
COATING

3.0
HSS-E-PM
PVD TiAlN



										P		尺寸, mm, inch			
TDZ	TPI	LJ	CZ _{MS}	THCHT	TCTR	订货号	PTM	DCON _{MS}	TD	LF	THL	NOF	PHD	BSG	
UNC1/2-13	13.00	55.00	.367 x .275	B	2BX	T200-PM115AE-1/2	★	9.3	12.70	110.0	23.0	4	10.8	DIN/ANSI	
		2.165						.367	.500	4.331	.906		.425		
UNC5/8-11	11.00	55.00	.480 x .360	B	2BX	T200-PM115AE-5/8	★	12.2	15.88	110.0	23.0	4	13.5	DIN/ANSI	
		2.165						.480	.625	4.331	.906		.531		
UNC3/4-10	10.00	72.00	.590 x .442	B	2BX	T200-PM115AE-3/4	★	15.0	19.05	125.0	30.0	4	16.5	DIN/ANSI	
		2.835						.590	.750	4.921	1.181		.650		



A

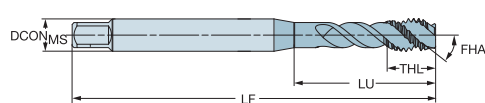
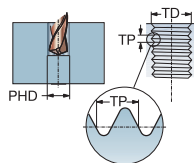
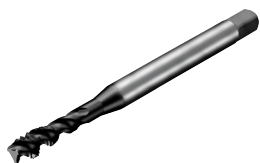
攻丝

切削丝锥

CoroTap™ 300 螺旋槽切削丝锥

螺纹形式: 公制

DIN/ANSI

ULDR
FHA
SUBSTRATE
COATING3.0
48°
HSS-E-PM
PVD TiAlN

B

														p 尺寸, mm, inch	
TDZ	TP	LU	CZC _{MS}	THCHT	TCTR	订货号	ITEM	DCON _{MS}	TD	LF	THL	NOF	PHD	BSG	
M 3	0.50	18.00	.141 x .110	C	6HX	T300-PM100AA-M3	★	3.6	3.00	56.0	7.0	3	2.5	DIN/ANSI	
		.709						.141	.118	2.205	.276		.098		
M 4	0.70	21.00	.168 x .131	C	6HX	T300-PM100AA-M4	★	4.3	4.00	63.0	8.0	3	3.3	DIN/ANSI	
		.827						.168	.157	2.480	.315		.130		
M 5	0.80	27.50	.194 x .152	C	6HX	T300-PM100AA-M5	★	4.9	5.00	70.0	8.0	3	4.2	DIN/ANSI	
		1.083						.194	.197	2.756	.315		.165		
M 6	1.00	26.00	.255 x .191	C	6HX	T300-PM100AA-M6	★	6.5	6.00	80.0	11.0	3	5.0	DIN/ANSI	
		1.024						.255	.236	3.150	.433		.197		
M 8	1.25	33.50	.318 x .238	C	6HX	T300-PM100AA-M8	★	8.1	8.00	90.0	12.0	3	6.8	DIN/ANSI	
		1.319						.318	.315	3.543	.472		.268		
M 10	1.50	38.00	.381 x .286	C	6HX	T300-PM100AA-M10	★	9.7	10.00	100.0	15.0	3	8.5	DIN/ANSI	
		1.496						.381	.394	3.937	.591		.335		

C

D



76

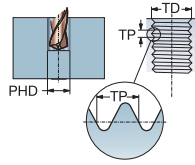
CoroTap™ 300 螺旋槽切削丝锥

螺纹形式：公制

DIN/ANSI

ULDR
FHA
SUBSTRATE
COATING

3.0
48°
HSS-E-PM
PVD TiAlN



										p 尺寸, mm, inch				
TDZ	TP	LU	CZC _{MS}	THCT	TCR	订货号	PM	DCON _{MS}	TD	LF	THL	NOF	PHD	BSG
M12	1.75	55.00	.367 x .275	C	6HX	T300-PM101AA-M12	★	9.3	12.00	110.0	18.0	3	10.2	DIN/ANSI
		2.165						.367	.472	4.331	.709		.402	
M14	2.00	60.00	.429 x .322	C	6HX	T300-PM101AA-M14	★	10.9	14.00	110.0	20.0	3	12.0	DIN/ANSI
		2.362						.429	.551	4.331	.787		.472	
M16	2.00	55.00	.480 x .360	C	6HX	T300-PM101AA-M16	★	12.2	16.00	110.0	20.0	4	14.0	DIN/ANSI
		2.165						.480	.630	4.331	.787		.551	
M18	2.50	72.00	.542 x .406	C	6HX	T300-PM101AA-M18	★	13.8	18.00	125.0	25.0	4	15.5	DIN/ANSI
		2.835						.542	.709	4.921	.984		.610	
M20	2.50	72.00	.652 x .489	C	6HX	T300-PM101AA-M20	★	16.6	20.00	140.0	25.0	4	17.5	DIN/ANSI
		2.835						.652	.787	5.512	.984		.689	
M24	3.00	86.00	.760 x .570	C	6HX	T300-PM101AA-M24	★	19.3	24.00	160.0	30.0	4	21.0	DIN/ANSI
		3.386						.760	.945	6.299	1.181		.827	

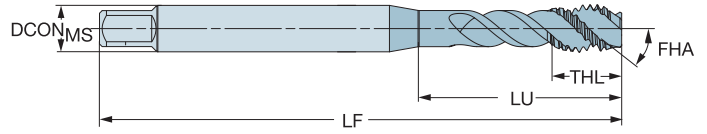
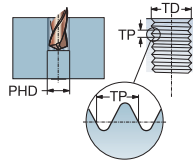


CoroTap™ 300 螺旋槽切削丝锥

螺纹形式：公制

DIN 371

ULDR 3.0
 FHA 48°
 SUBSTRATE HSS-E-PM
 COATING PVD TiAlN



B

										p 尺寸, mm, inch				
TDZ	TP	LU	CZC _{MS}	THCHT	TCTR	订货号	PM	DCON _{MS}	TD	LF	THL	NOF	PHD	BSG
M1.6	0.35	6.00	2.50 x 2.10	C	6HX	T300-PM100DA-M1.6	★	2.5	1.60	40.0	6.0	2	1.3	DIN 371
		.236						.098	.063	1.575	.236		.049	
M2	0.40	9.00	2.80 x 2.10	C	6HX	T300-PM100DA-M2	★	2.8	2.00	45.0	4.0	3	1.6	DIN 371
		.354						.110	.079	1.772	.157		.063	
M2.3	0.40	12.00	2.80 x 2.10	C	6HX	T300-PM100DA-M2.3	★	2.8	2.30	45.0	4.0	3	1.9	DIN 371
		.472						.110	.091	1.772	.157		.073	
M2.5	0.45	12.50	2.80 x 2.10	C	6HX	T300-PM100DA-M2.5	★	2.8	2.50	50.0	4.0	3	2.1	DIN 371
		.492						.110	.098	1.969	.157		.081	
M2.6	0.45	12.50	2.80 x 2.10	C	6HX	T300-PM100DA-M2.6	★	2.8	2.60	50.0	4.0	3	2.2	DIN 371
		.492						.110	.102	1.969	.157		.085	
M3	0.50	18.00	3.50 x 2.70	C	6HX	T300-PM100DA-M3	★	3.5	3.00	56.0	6.0	3	2.5	DIN 371
		.709						.138	.118	2.205	.236		.098	
M3.5	0.60	20.00	4.00 x 3.00	C	6HX	T300-PM100DA-M3.5	★	4.0	3.50	56.0	6.5	3	2.9	DIN 371
		.787						.157	.138	2.205	.256		.114	
M4	0.70	21.00	4.50 x 3.40	C	6HX	T300-PM100DA-M4	★	4.5	4.00	63.0	7.0	3	3.3	DIN 371
		.827						.177	.157	2.480	.276		.130	
M5	0.80	25.00	6.00 x 4.90	C	6HX	T300-PM100DA-M5	★	6.0	5.00	70.0	8.0	3	4.2	DIN 371
		.984						.236	.197	2.756	.315		.165	
M6	1.00	31.00	6.00 x 4.90	C	6HX	T300-PM100DA-M6	★	6.0	6.00	80.0	10.0	3	5.0	DIN 371
		1.220						.236	.236	3.150	.394		.197	
M7	1.00	31.00	7.00 x 5.50	C	6HX	T300-PM100DA-M7	★	7.0	7.00	80.0	10.0	3	6.0	DIN 371
		1.220						.276	.276	3.150	.394		.236	
M8	1.25	35.00	8.00 x 6.20	C	6HX	T300-PM100DA-M8	★	8.0	8.00	90.0	12.0	3	6.8	DIN 371
		1.378						.315	.315	3.543	.472		.268	
M10	1.50	39.00	10.00 x 8.00	C	6HX	T300-PM100DA-M10	★	10.0	10.00	100.0	15.0	3	8.5	DIN 371
		1.535						.394	.394	3.937	.591		.335	

D

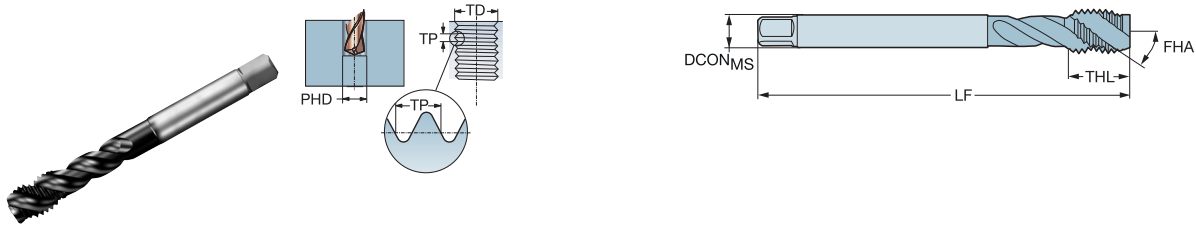


CoroTap™ 300 螺旋槽切削丝锥

螺纹形式：公制

DIN 376

ULDR 3.0
 FHA 48°
 SUBSTRATE HSS-E-PM
 COATING PVD TIALN

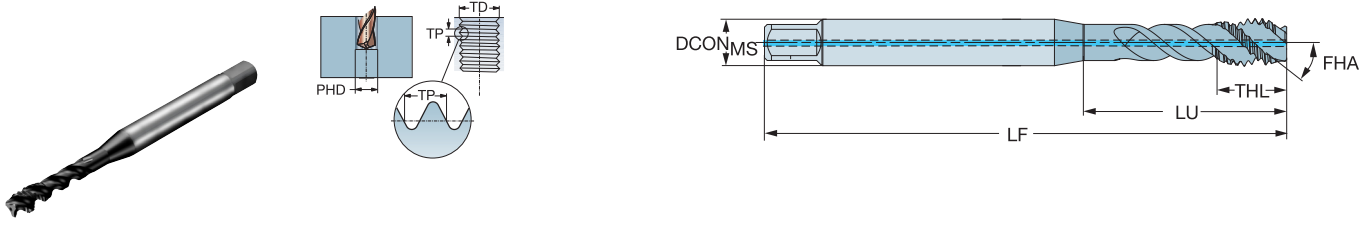


										p		尺寸, mm, inch		
TDZ	TP	LU	CZC _{IS}	THCHT	TCTR	订货号	PM	DCON _{MS}	TD	LF	THL	NOF	PHD	BSG
M5	0.80	35.00	3.50 x 2.70	C	6HX	T300-PM101DA-M5	★	3.5	5.00	70.0	8.0	3	4.2	DIN 376
	1.378							.138	.197	2.756	.315		.165	
M6	1.00	40.00	4.50 x 3.40	C	6HX	T300-PM101DA-M6	★	4.5	6.00	80.0	10.0	3	5.0	DIN 376
	1.575							.177	.236	3.150	.394		.197	
M8	1.25	43.00	6.00 x 4.90	C	6HX	T300-PM101DA-M8	★	6.0	8.00	90.0	13.0	3	6.8	DIN 376
	1.693							.236	.315	3.543	.512		.268	
M10	1.50	48.00	7.00 x 5.50	C	6HX	T300-PM101DA-M10	★	7.0	10.00	100.0	15.0	3	8.5	DIN 376
	1.890							.276	.394	3.937	.591		.335	
M12	1.75	55.00	9.00 x 7.00	C	6HX	T300-PM101DA-M12	★	9.0	12.00	110.0	16.0	3	10.2	DIN 376
	2.165							.354	.472	4.331	.630		.402	
M14	2.00	60.00	11.00 x 9.00	C	6HX	T300-PM101DA-M14	★	11.0	14.00	110.0	20.0	3	12.0	DIN 376
	2.362							.433	.551	4.331	.787		.472	
M16	2.00	60.00	12.00 x 9.00	C	6HX	T300-PM101DA-M16	★	12.0	16.00	110.0	20.0	4	14.0	DIN 376
	2.362							.472	.630	4.331	.787		.551	
M18	2.50	72.00	14.00 x 11.00	C	6HX	T300-PM101DA-M18	★	14.0	18.00	125.0	25.0	4	15.5	DIN 376
	2.835							.551	.709	4.921	.984		.610	
M20	2.50	72.00	16.00 x 12.00	C	6HX	T300-PM101DA-M20	★	16.0	20.00	140.0	25.0	4	17.5	DIN 376
	2.835							.630	.787	5.512	.984		.689	
M22	2.50	82.00	18.00 x 14.50	C	6HX	T300-PM101DA-M22	★	18.0	22.00	140.0	25.0	4	19.5	DIN 376
	3.228							.709	.866	5.512	.984		.768	
M24	3.00	91.00	18.00 x 14.50	C	6HX	T300-PM101DA-M24	★	18.0	24.00	160.0	30.0	4	21.0	DIN 376
	3.583							.709	.945	6.299	1.181		.827	
M27	3.00	91.00	20.00 x 16.00	C	6HX	T300-PM101DA-M27	★	20.0	27.00	160.0	30.0	4	24.0	DIN 376
	3.583							.787	1.063	6.299	1.181		.945	
M30	3.50	108.00	22.00 x 18.00	C	6HX	T300-PM101DA-M30	★	22.0	30.00	180.0	36.0	4	26.5	DIN 376
	4.252							.866	1.181	7.087	1.417		1.043	

CoroTap™ 300 螺旋槽切削丝锥

螺纹形式：公制
DIN 371

ULDR 3.0
FHA 48°
CNSC 1
CXSC 1
SUBSTRATE HSS-E-PM
COATING PVD TiAlN



B

		p		尺寸, mm, inch										
TDZ	TP	LU	CZC _{MS}	THCHT	TCTR	订货号	PM	DCON _{MS}	TD	LF	THL	NOF	PHD	BSG
M4	0.70	21.00	4.50 x 3.40	C	6HX	T300-PM104DA-M4	★	4.5	4.00	63.0	7.0	3	3.3	DIN 371
	.827							.177	.157	2.480	.276		.130	
M5	0.80	25.00	6.00 x 4.90	C	6HX	T300-PM104DA-M5	★	6.0	5.00	70.0	8.0	3	4.2	DIN 371
	.984							.236	.197	2.756	.315		.165	
M6	1.00	31.00	6.00 x 4.90	C	6HX	T300-PM104DA-M6	★	6.0	6.00	80.0	10.0	3	5.0	DIN 371
	1.220							.236	.236	3.150	.394		.197	
M7	1.00	31.00	7.00 x 5.50	C	6HX	T300-PM104DA-M7	★	7.0	7.00	80.0	10.0	3	6.0	DIN 371
	1.220							.276	.276	3.150	.394		.236	
M8	1.25	35.00	8.00 x 6.20	C	6HX	T300-PM104DA-M8	★	8.0	8.00	90.0	12.0	3	6.8	DIN 371
	1.378							.315	.315	3.543	.472		.268	
M10	1.50	39.00	10.00 x 8.00	C	6HX	T300-PM104DA-M10	★	10.0	10.00	100.0	15.0	3	8.5	DIN 371
	1.535							.394	.394	3.937	.591		.335	

C

D

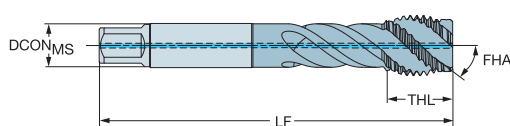
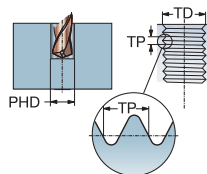


CoroTap™ 300 螺旋槽切削丝锥

螺纹形式：公制

DIN 376

ULDR 3.0
 FHA 48°
 CNSC 1
 CXSC 1
 SUBSTRATE HSS-E-PM
 COATING PVD TiAlN



										p		尺寸, mm, inch					
TDZ	TP	LU	CZC _{MS}	THCHT	TCTR	订货号	PM	DCON _{MS}	TD	LF	THL	NOF	PHD	BSG			
M12	1.75	55.00	9.00 x 7.00	C	6HX	T300-PM105DA-M12	★	9.0	12.00	110.0	16.0	3	10.2	DIN 376			
		2.165						.354	.472	4.331	.630		.402				
M14	2.00	60.00	11.00 x 9.00	C	6HX	T300-PM105DA-M14	★	11.0	14.00	110.0	20.0	3	12.0	DIN 376			
		2.362						.433	.551	4.331	.787		.472				
M16	2.00	60.00	12.00 x 9.00	C	6HX	T300-PM105DA-M16	★	12.0	16.00	110.0	20.0	4	14.0	DIN 376			
		2.362						.472	.630	4.331	.787		.551				
M18	2.50	72.00	14.00 x 11.00	C	6HX	T300-PM105DA-M18	★	14.0	18.00	125.0	25.0	4	15.5	DIN 376			
		2.835						.551	.709	4.921	.984		.610				
M20	2.50	72.00	16.00 x 12.00	C	6HX	T300-PM105DA-M20	★	16.0	20.00	140.0	25.0	4	17.5	DIN 376			
		2.835						.630	.787	5.512	.984		.689				
M22	2.50	82.00	18.00 x 14.50	C	6HX	T300-PM105DA-M22	★	18.0	22.00	140.0	25.0	4	19.5	DIN 376			
		3.228						.709	.866	5.512	.984		.768				
M24	3.00	91.00	18.00 x 14.50	C	6HX	T300-PM105DA-M24	★	18.0	24.00	160.0	30.0	4	21.0	DIN 376			
		3.583						.709	.945	6.299	1.181		.827				
M27	3.00	91.00	20.00 x 16.00	C	6HX	T300-PM105DA-M27	★	20.0	27.00	160.0	30.0	4	24.0	DIN 376			
		3.583						.787	1.063	6.299	1.181		.945				
M30	3.50	108.00	22.00 x 18.00	C	6HX	T300-PM105DA-M30	★	22.0	30.00	180.0	36.0	4	26.5	DIN 376			
		4.252						.866	1.181	7.087	1.417		1.043				



A

攻丝

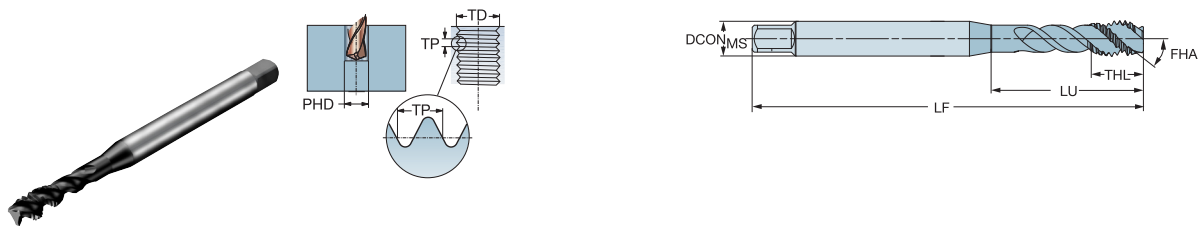
切削丝锥

CoroTap™ 300 螺旋槽切削丝锥

螺纹形式：公制

JIS-B-4430

ULDR 3.0
 FHA 48°
 SUBSTRATE HSS-E-PM
 COATING PVD TIALN



B

													p 尺寸, mm, inch	
TDZ	TP	LU	CZG _{IS}	THCHT	TCTR	订货号	PM	DCON _{IS}	TD	LF	THL	NOF	PHD	BSG
M3	0.50	18.00	4.00 x 3.20	C	6HX	T300-PM100JA-M3	★	4.0	3.00	46.0	6.0	3	2.5	JIS-B-4430
	.709							.157	.118	1.811	.236		.098	
M4	0.70	21.00	5.00 x 4.00	C	6HX	T300-PM100JA-M4	★	5.0	4.00	52.0	7.0	3	3.3	JIS-B-4430
	.827							.197	.157	2.047	.276		.130	
M5	0.80	25.00	5.50 x 4.50	C	6HX	T300-PM100JA-M5	★	5.5	5.00	60.0	8.0	3	4.2	JIS-B-4430
	.984							.217	.197	2.362	.315		.165	
M6	1.00	30.00	6.00 x 4.50	C	6HX	T300-PM100JA-M6	★	6.0	6.00	62.0	10.0	3	5.0	JIS-B-4430
	1.181							.236	.236	2.441	.394		.197	

C

D



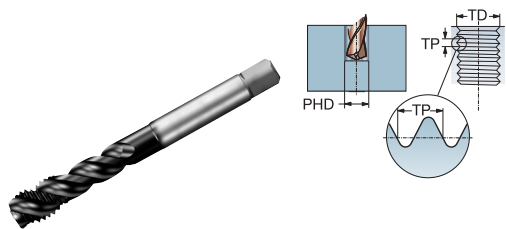
76

CoroTap™ 300 螺旋槽切削丝锥

螺纹形式：公制

JIS-B-4430

ULDR 3.0
 FHA 48°
 SUBSTRATE HSS-E-PM
 COATING PVD TiAlN



										p 尺寸, mm, inch				
TDZ	TP	LU	CZC _{IS}	THCHT	TCTR	订货号	PM	DCON _{MS}	TD	LF	THL	NOF	PHD	BSG
M8	1.25	37.00	6.20 x 5.00	C	6HX	T300-PM101JA-M8	★	6.2	8.00	70.0	12.0	3	6.8	JIS-B-4430
		1.457						.244	.315	2.756	.472		.268	
M10	1.50	39.00	7.00 x 5.50	C	6HX	T300-PM101JA-M10	★	7.0	10.00	75.0	15.0	3	8.5	JIS-B-4430
		1.535						.276	.394	2.953	.591		.335	
M12	1.75	41.00	8.50 x 6.50	C	6HX	T300-PM101JA-M12	★	8.5	12.00	82.0	16.0	3	10.3	JIS-B-4430
		1.614						.335	.472	3.228	.630		.406	
M16	2.00	53.00	12.50 x 10.00	C	6HX	T300-PM101JA-M16	★	12.5	16.00	95.0	20.0	4	14.0	JIS-B-4430
		2.087						.492	.630	3.740	.787		.551	
M18	2.50	56.00	14.00 x 11.00	C	6HX	T300-PM101JA-M18	★	14.0	18.00	100.0	25.0	4	15.5	JIS-B-4430
		2.205						.551	.709	3.937	.984		.610	
M20	2.50	52.50	15.00 x 12.00	C	6HX	T300-PM101JA-M20	★	15.0	20.00	105.0	25.0	4	17.5	JIS-B-4430
		2.067						.591	.787	4.134	.984		.689	
M24	3.00	60.00	19.00 x 15.00	C	6HX	T300-PM101JA-M24	★	19.0	24.00	120.0	30.0	4	21.0	JIS-B-4430
		2.362						.748	.945	4.724	1.181		.827	



A

攻丝

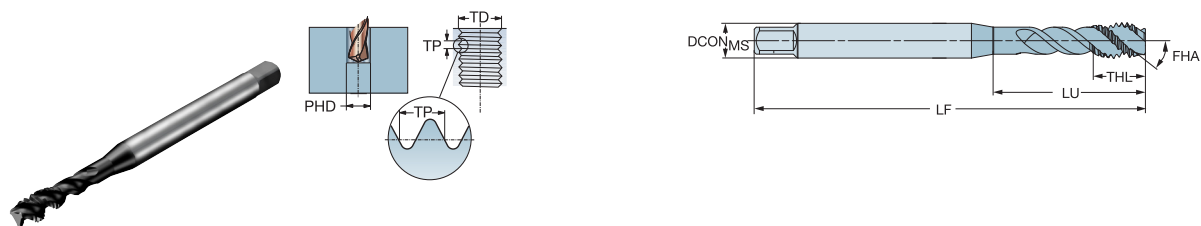
切削丝锥

CoroTap™ 300 螺旋槽切削丝锥

螺纹形式：公制细牙

JIS-B-4436

ULDR 3.0
 FHA 48°
 SUBSTRATE HSS-E-PM
 COATING PVD TiAlN



B

		p		尺寸, mm, inch									
		P		P									
TDZ	TP	LU	CZG _{IS}	THCHT	TCTR	订货号	DCON _{IS}	TD	LF	THL	NOF	PHD	BSG
MF4X0.5	0.50	21.00	5.00 x 4.00	C	6HX	T300-PM100JB-M4X050	5.0	4.00	52.0	7.0	3	3.5	JIS-B-4436
		.827					.197	.157	2.047	.276		.138	
MF5X0.5	0.50	25.00	5.50 x 4.50	C	6HX	T300-PM100JB-M5X050	5.5	5.00	52.0	8.0	3	4.5	JIS-B-4436
		.984					.217	.197	2.047	.315		.177	
MF6X0.5	0.50	30.00	6.00 x 4.50	C	6HX	T300-PM100JB-M6X050	6.0	6.00	62.0	10.0	3	5.5	JIS-B-4436
		1.181					.236	.236	2.441	.394		.217	
MF6X0.75	0.75	30.00	6.00 x 4.50	C	6HX	T300-PM100JB-M6X075	6.0	6.00	62.0	10.0	3	5.3	JIS-B-4436
		1.181					.236	.236	2.441	.394		.207	

C

D



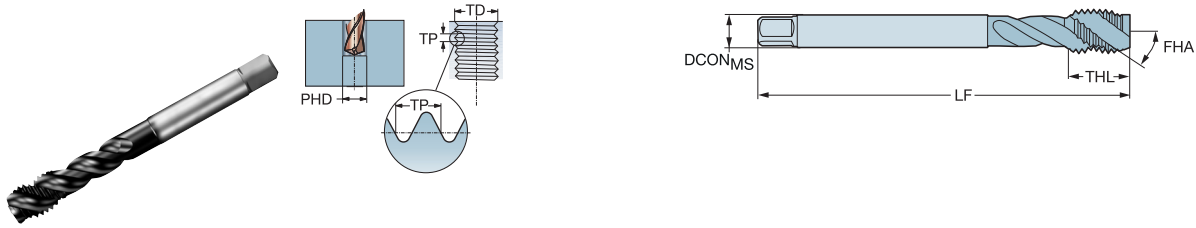
76

CoroTap™ 300 螺旋槽切削丝锥

螺纹形式：公制细牙

JIS-B-4436

ULDR 3.0
 FHA 48°
 SUBSTRATE HSS-E-PM
 COATING PVD TiAlN



										p		尺寸, mm, inch		
TDZ	TP	LU	CZC _{IS}	THCHT	TCTR	订货号	PTM	DCON _{IS}	TD	LF	THL	NOF	PHD	BSG
MF8X1	1.00	37.00	6.20 x 5.00	C	6HX	T300-PM101JB-M8X100	★	6.2	8.00	70.0	12.0	3	7.0	JIS-B-4436
		1.457						.244	.315	2.756	.472		.276	
MF10X1	1.00	39.00	7.00 x 5.50	C	6HX	T300-PM101JB-M10X100	★	7.0	10.00	70.0	12.0	3	9.0	JIS-B-4436
		1.535						.276	.394	2.756	.472		.354	
MF10X1.25	1.25	39.00	7.00 x 5.50	C	6HX	T300-PM101JB-M10X125	★	7.0	10.00	75.0	15.0	3	8.8	JIS-B-4436
		1.535						.276	.394	2.953	.591		.346	
MF12X1	1.00	35.00	8.50 x 6.50	C	6HX	T300-PM101JB-M12X100	★	8.5	12.00	70.0	13.0	3	11.0	JIS-B-4436
		1.378						.335	.472	2.756	.512		.433	
MF12X1.25	1.25	40.00	8.50 x 6.50	C	6HX	T300-PM101JB-M12X125	★	8.5	12.00	80.0	13.0	3	10.8	JIS-B-4436
		1.575						.335	.472	3.150	.512		.425	
MF12X1.5	1.50	40.00	8.50 x 6.50	C	6HX	T300-PM101JB-M12X150	★	8.5	12.00	82.0	13.0	3	10.5	JIS-B-4436
		1.575						.335	.472	3.228	.512		.413	
MF14X1.5	1.50	49.00	10.50 x 8.00	C	6HX	T300-PM101JB-M14X150	★	10.5	14.00	88.0	15.0	3	12.5	JIS-B-4436
		1.929						.413	.551	3.465	.591		.492	
MF16X1.5	1.50	47.50	12.50 x 10.00	C	6HX	T300-PM101JB-M16X150	★	12.5	16.00	95.0	15.0	4	14.5	JIS-B-4436
		1.870						.492	.630	3.740	.591		.571	
MF18X1.5	1.50	47.50	14.00 x 11.00	C	6HX	T300-PM101JB-M18X150	★	14.0	18.00	95.0	17.0	4	16.5	JIS-B-4436
		1.870						.551	.709	3.740	.669		.650	
MF20X1.5	1.50	47.50	15.00 x 12.00	C	6HX	T300-PM101JB-M20X150	★	15.0	20.00	95.0	17.0	4	18.5	JIS-B-4436
		1.870						.591	.787	3.740	.669		.728	



A

攻丝

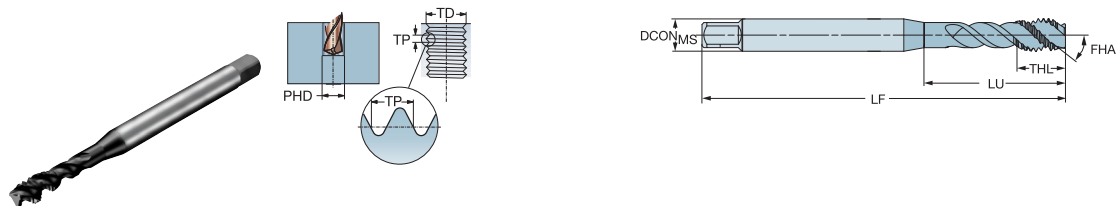
切削丝锥

CoroTap™ 300 螺旋槽切削丝锥

螺纹形式：公制细牙

DIN/ANSI

ULDR 3.0
 FHA 48°
 SUBSTRATE HSS-E-PM
 COATING PVD TIALN



B

											p		尺寸, mm, inch			
TDZ	TP	LU	CZG _{MS}	THCHT	TCTR	订货号	CON	TD	LF	THL	NOF	PHD	BSG			
M8x1	1.00	33.50	.318 x .238	C	6HX	T300-PM100AB-M8X100	★	8.1	8.00	90.0	12.0	3	7.0	DIN/ANSI		
		1.319						.318	.315	3.543	.472		.276			

C

D



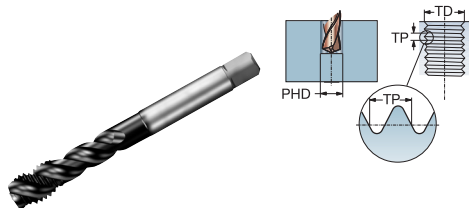
76

CoroTap™ 300 螺旋槽切削丝锥

螺纹形式：公制细牙

DIN/ANSI

ULDR 3.0
 FHA 48°
 SUBSTRATE HSS-E-PM
 COATING PVD TIALN



										p 尺寸, mm, inch				
TDZ	TP	LU	CZC _{IS}	THCT	TCTR	订货号	PM	DCON _{IS}	TD	LF	THL	NOF	PHD	BSG
MF12x1.25	1.25	55.00	.367 x .275	C	6HX	T300-PM101AB-M12X125	★	9.3	12.00	110.0	18.0	3	10.8	DIN/ANSI
		2.165						.367	.472	4.331	.709		.425	
MF12x1.5	1.50	55.00	.367 x .275	C	6HX	T300-PM101AB-M12X150	★	9.3	12.00	110.0	18.0	3	10.5	DIN/ANSI
		2.165						.367	.472	4.331	.709		.413	
MF16x1.5	1.50	55.00	.480 x .360	C	6HX	T300-PM101AB-M16X150	★	12.2	16.00	110.0	20.0	4	14.5	DIN/ANSI
		2.165						.480	.630	4.331	.787		.571	
MF18x1.5	1.50	72.00	.542 x .406	C	6HX	T300-PM101AB-M18X150	★	13.8	18.00	125.0	25.0	4	16.5	DIN/ANSI
		2.835						.542	.709	4.921	.984		.650	



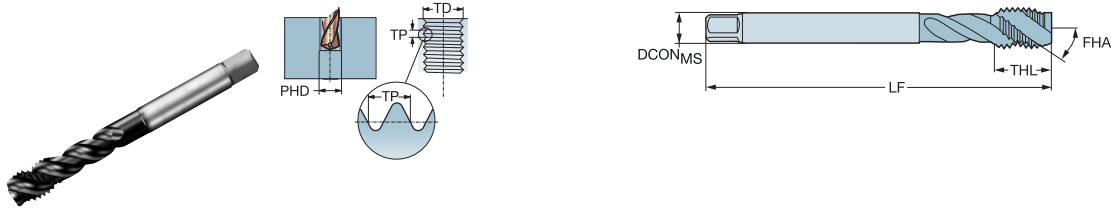
CoroTap™ 300 螺旋槽切削丝锥

螺纹形式：公制细牙

DIN 374

ULDR
FHA
SUBSTRATE
COATING

3.0
48°
HSS-E-PM
PVD TiAlN



							p 尺寸, mm, inch							
TDZ	TP	LU	CZ ₆	THCHT	TCTR	订货号	PM	DCON _{MS}	TD	LF	THL	NOF	PHD	BSG
MF4x0.5	0.50	31.50	2.80 x 2.10	C	6HX	T300-PM101DB-M4X050	★	2.8	4.00	63.0	7.0	3	3.5	DIN 374
		1.240						.110	.157	2.480	.276		.138	
MF5x0.5	0.50	35.00	3.50 x 2.70	C	6HX	T300-PM101DB-M5X050	★	3.5	5.00	70.0	8.0	3	4.5	DIN 374
		1.378						.138	.197	2.756	.315		.177	
MF6x0.75	0.75	40.00	4.50 x 3.40	C	6HX	T300-PM101DB-M6X075	★	4.5	6.00	80.0	10.0	3	5.3	DIN 374
		1.575						.177	.236	3.150	.394		.209	
MF8x0.75	0.75	36.00	6.00 x 4.90	C	6HX	T300-PM101DB-M8X075	★	6.0	8.00	80.0	13.0	3	7.3	DIN 374
		1.417						.236	.315	3.150	.512		.287	
MF8x1	1.00	43.00	6.00 x 4.90	C	6HX	T300-PM101DB-M8X100	★	6.0	8.00	90.0	13.0	3	7.0	DIN 374
		1.693						.236	.315	3.543	.512		.276	
MF10x1	1.00	43.00	7.00 x 5.50	C	6HX	T300-PM101DB-M10X100	★	7.0	10.00	90.0	13.0	3	9.0	DIN 374
		1.693						.276	.394	3.543	.512		.354	
MF10x1.25	1.25	48.00	7.00 x 5.50	C	6HX	T300-PM101DB-M10X125	★	7.0	10.00	100.0	15.0	3	8.8	DIN 374
		1.890						.276	.394	3.937	.591		.346	
MF12x1	1.00	50.00	9.00 x 7.00	C	6HX	T300-PM101DB-M12X100	★	9.0	12.00	100.0	15.0	3	11.0	DIN 374
		1.969						.354	.472	3.937	.591		.433	
MF12x1.25	1.25	50.00	9.00 x 7.00	C	6HX	T300-PM101DB-M12X125	★	9.0	12.00	100.0	15.0	3	10.8	DIN 374
		1.969						.354	.472	3.937	.591		.425	
MF12x1.5	1.50	50.00	9.00 x 7.00	C	6HX	T300-PM101DB-M12X150	★	9.0	12.00	100.0	15.0	3	10.5	DIN 374
		1.969						.354	.472	3.937	.591		.413	
MF14x1	1.00	50.00	11.00 x 9.00	C	6HX	T300-PM101DB-M14X100	★	11.0	14.00	100.0	15.0	3	13.0	DIN 374
		1.969						.433	.551	3.937	.591		.512	
MF14x1.25	1.25	50.00	11.00 x 9.00	C	6HX	T300-PM101DB-M14X125	★	11.0	14.00	100.0	15.0	3	12.8	DIN 374
		1.969						.433	.551	3.937	.591		.504	
MF14x1.5	1.50	50.00	11.00 x 9.00	C	6HX	T300-PM101DB-M14X150	★	11.0	14.00	100.0	15.0	3	12.5	DIN 374
		1.969						.433	.551	3.937	.591		.492	
MF16x1	1.00	50.00	12.00 x 9.00	C	6HX	T300-PM101DB-M16X100	★	12.0	16.00	100.0	15.0	4	15.0	DIN 374
		1.969						.472	.630	3.937	.591		.591	
MF16x1.5	1.50	50.00	12.00 x 9.00	C	6HX	T300-PM101DB-M16X150	★	12.0	16.00	100.0	15.0	4	14.5	DIN 374
		1.969						.472	.630	3.937	.591		.571	
MF18x1	1.00	58.00	14.00 x 11.00	C	6HX	T300-PM101DB-M18X100	★	14.0	18.00	110.0	17.0	4	17.0	DIN 374
		2.283						.551	.709	4.331	.669		.669	
MF18x1.5	1.50	58.00	14.00 x 11.00	C	6HX	T300-PM101DB-M18X150	★	14.0	18.00	110.0	17.0	4	16.5	DIN 374
		2.283						.551	.709	4.331	.669		.650	
MF20x1	1.00	58.00	16.00 x 12.00	C	6HX	T300-PM101DB-M20X100	★	16.0	20.00	125.0	17.0	4	19.0	DIN 374
		2.283						.630	.787	4.921	.669		.748	
MF20x1.5	1.50	58.00	16.00 x 12.00	C	6HX	T300-PM101DB-M20X150	★	16.0	20.00	125.0	17.0	4	18.5	DIN 374
		2.283						.630	.787	4.921	.669		.728	
MF22x1.5	1.50	60.00	18.00 x 14.50	C	6HX	T300-PM101DB-M22X150	★	18.0	22.00	125.0	17.0	4	20.5	DIN 374
		2.362						.709	.866	4.921	.669		.807	
MF24x1.5	1.50	67.00	18.00 x 14.50	C	6HX	T300-PM101DB-M24X150	★	18.0	24.00	140.0	20.0	4	22.5	DIN 374
		2.638						.709	.945	5.512	.787		.886	
MF24x2	2.00	67.00	18.00 x 14.50	C	6HX	T300-PM101DB-M24X200	★	18.0	24.00	140.0	20.0	4	22.0	DIN 374
		2.638						.709	.945	5.512	.787		.866	
MF25x1.5	1.50	67.00	18.00 x 14.50	C	6HX	T300-PM101DB-M25X150	★	18.0	25.00	140.0	20.0	4	23.5	DIN 374
		2.638						.709	.984	5.512	.787		.925	
MF26x1.5	1.50	67.00	18.00 x 14.50	C	6HX	T300-PM101DB-M26X150	★	18.0	26.00	140.0	20.0	4	24.5	DIN 374
		2.638						.709	1.024	5.512	.787		.965	
MF27x1.5	1.50	67.00	20.00 x 16.00	C	6HX	T300-PM101DB-M27X150	★	20.0	27.00	140.0	20.0	4	25.5	DIN 374
		2.638						.787	1.063	5.512	.787		1.004	
MF27x2	2.00	67.00	20.00 x 16.00	C	6HX	T300-PM101DB-M27X200	★	20.0	27.00	140.0	20.0	4	25.0	DIN 374
		2.638						.787	1.063	5.512	.787		.984	
MF30x1.5	1.50	67.00	22.00 x 18.00	C	6HX	T300-PM101DB-M30X150	★	22.0	30.00	150.0	20.0	4	28.5	DIN 374
		2.638						.866	1.181	5.906	.787		1.122	
MF30x2	2.00	67.00	22.00 x 18.00	C	6HX	T300-PM101DB-M30X200	★	22.0	30.00	150.0	20.0	4	28.0	DIN 374
		2.638						.866	1.181	5.906	.787		1.102	

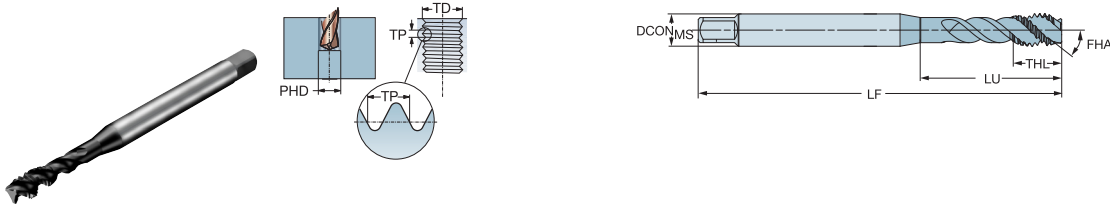


CoroTap™ 300 螺旋槽切削丝锥

螺纹形式: UNC

DIN/ANSI

ULDR 3.0
 FHA 48°
 SUBSTRATE HSS-E-PM
 COATING PVD TIALN



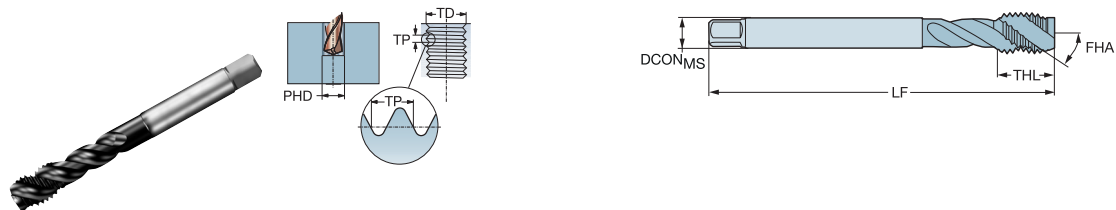
										p		尺寸, mm, inch			
TDZ	TPI	LU	CZC ₆	THCHT	TCTR	订货号	PM	DCON _{MS}	TD	LF	THL	NOF	PHD	BSG	
UNC2-56	56.00	12.00	.141 x .110	C	3B	T300-PM100AE-2-56	★	3.6	2.18	45.0	4.0	3	1.9	DIN/ANSI	
		.472						.141	.086	1.772	.157		.073		
UNC4-40	40.00	17.00	.141 x .110	C	2BX	T300-PM100AE-4-40	★	3.6	2.85	56.0	6.5	3	2.4	DIN/ANSI	
		.669						.141	.112	2.205	.256		.093		
UNC#5-40	40.00	18.00	.141 x .110	C	2BX	T300-PM100AE-5-40	★	3.6	3.18	56.0	6.5	3	2.7	DIN/ANSI	
		.709						.141	.125	2.205	.256		.104		
UNC#6-32	32.00	21.00	.141 x .110	C	2BX	T300-PM100AE-6-32	★	3.6	3.51	56.0	6.5	3	2.9	DIN/ANSI	
		.827						.141	.138	2.205	.256		.112		
UNC#8-32	32.00	21.00	.168 x .131	C	3BX	T300-PM100AE-8-32	★	4.3	4.17	63.0	7.0	3	3.5	DIN/ANSI	
		.827						.168	.164	2.480	.276		.138		
UNC#10-24	24.00	27.50	.194 x .152	C	3BX	T300-PM100AE-10-24	★	4.9	4.83	70.0	8.5	3	3.9	DIN/ANSI	
		1.083						.194	.190	2.756	.335		.154		
UNC1/4-20	20.00	25.00	.255 x .191	C	3BX	T300-PM100AE-1/4	★	6.5	6.35	80.0	10.0	3	5.1	DIN/ANSI	
		.984						.255	.250	3.150	.394		.201		
UNC5/16-18	18.00	33.50	.318 x .238	C	3BX	T300-PM100AE-5/16	★	8.1	7.94	90.0	12.0	3	6.6	DIN/ANSI	
		1.319						.318	.313	3.543	.472		.260		
UNC3/8-16	16.00	38.00	.381 x .286	C	3BX	T300-PM100AE-3/8	★	9.7	9.53	100.0	16.0	3	8.0	DIN/ANSI	
		1.496						.381	.375	3.937	.630		.315		



CoroTap™ 300 螺旋槽切削丝锥

螺纹形式: UNC

DIN/ANSI

ULDR
FHA
SUBSTRATE
COATING3.0
48°
HSS-E-PM
PVD TiAlN

											p		尺寸, mm, inch	
TDZ	TPI	LU	CZC _{MS}	THCHT	TCTR	订货号	PTM	DCON _{MS}	TD	LF	THL	NOF	PHD	BSG
UNC7/16-14	14.00	48.00	.323 x .242	C	3BX	T300-PM101AE-7/16	★	8.2	11.11	100.0	15.0	3	9.4	DIN/ANSI
		1.890						.323	.438	3.937	.591		.370	
UNC1/2-13	13.00	55.00	.367 x .275	C	3BX	T300-PM101AE-1/2	★	9.3	12.70	110.0	18.0	3	10.8	DIN/ANSI
		2.165						.367	.500	4.331	.709		.425	
UNC5/8-11	11.00	55.00	.480 x .360	C	3BX	T300-PM101AE-5/8	★	12.2	15.88	110.0	20.0	4	13.5	DIN/ANSI
		2.165						.480	.625	4.331	.787		.531	
UNC3/4-10	10.00	72.00	.590 x .442	C	3BX	T300-PM101AE-3/4	★	15.0	19.05	125.0	25.0	4	16.5	DIN/ANSI
		2.835						.590	.750	4.921	.984		.650	
UNC7/8-9	9.00	81.00	.697 x .523	C	3BX	T300-PM101AE-7/8	★	17.7	22.23	140.0	25.0	4	19.5	DIN/ANSI
		3.189						.697	.875	5.512	.984		.768	
UNC1"-8	8.00	86.00	.800 x .600	C	3BX	T300-PM101AE-1	★	20.3	25.40	160.0	30.0	4	22.3	DIN/ANSI
		3.386						.800	1.000	6.299	1.181		.876	

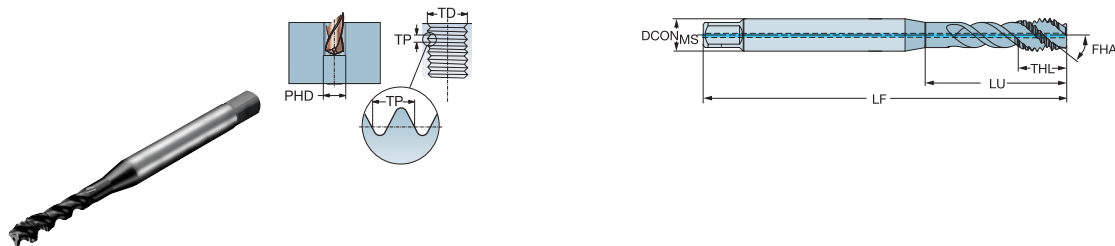


CoroTap™ 300 螺旋槽切削丝锥

螺纹形式: UNC

DIN/ANSI

ULDR 3.0
 FHA 48°
 CNCS 1
 CXSC 1
 SUBSTRATE HSS-E-PM
 COATING PVD TIALN



										p 尺寸, mm, inch				
TDZ	TPI	LU	CZC _{IS}	THCHT	TCTR	订货号	PIPM	DCON _{IS}	TD	LF	THL	NOF	PHD	BSG
UNC1/4-20	20.00	24.50	.255 x .191	C	2BX	T300-PM104AE-1/4	★	6.5	6.35	80.0	10.0	3	5.1	DIN/ANSI
		.965						.255	.250	3.150	.394		.201	
UNC5/16-18	18.00	33.00	.318 x .238	C	2BX	T300-PM104AE-5/16	★	8.1	7.94	90.0	12.0	3	6.6	DIN/ANSI
		1.299						.318	.313	3.543	.472		.260	
UNC3/8-16	16.00	38.00	.381 x .286	C	2BX	T300-PM104AE-3/8	★	9.7	9.53	100.0	16.0	3	8.0	DIN/ANSI
		1.496						.381	.375	3.937	.630		.315	



A

攻丝

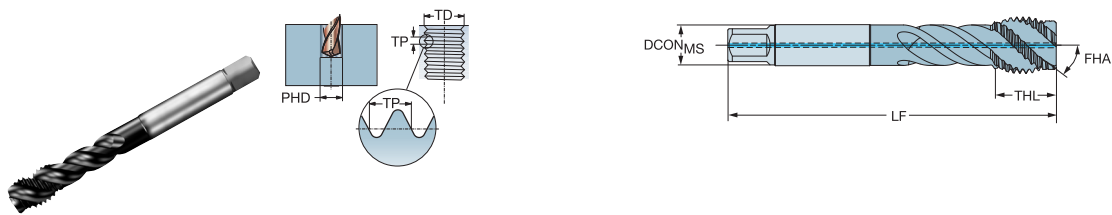
切削丝锥

CoroTap™ 300 螺旋槽切削丝锥

螺纹形式: UNC

DIN/ANSI

ULDR 3.0
 FHA 48°
 CNCS 1
 CXSC 1
 SUBSTRATE HSS-E-PM
 COATING PVD TIALN



B

		p		尺寸, mm, inch										
TDZ	TPI	LU	CZC _{MS}	THCHT	TCTR	订货号	PM	DCON _{MS}	TD	LF	THL	NOF	PHD	BSG
UNC1/2-13	13.00	55.00	.367 x .275	C	2BX	T300-PM105AE-1/2	★	9.3	12.70	110.0	18.0	3	10.8	DIN/ANSI
	2.165							.367	.500	4.331	.709		.425	
UNC5/8-11	11.00	55.00	.480 x .360	C	2BX	T300-PM105AE-5/8	★	12.2	15.88	110.0	20.0	4	13.5	DIN/ANSI
	2.165							.480	.625	4.331	.787		.531	
UNC3/4-10	10.00	72.00	.590 x .442	C	2BX	T300-PM105AE-3/4	★	15.0	19.05	125.0	25.0	4	16.5	DIN/ANSI
	2.835							.590	.750	4.921	.984		.650	
UNC7/8-9	9.00	81.00	.697 x .523	C	2BX	T300-PM105AE-7/8	★	17.7	22.23	140.0	25.0	4	19.5	DIN/ANSI
	3.189							.697	.875	5.512	.984		.768	
UNC1"-8	8.00	86.00	.800 x .600	C	2BX	T300-PM105AE-1	★	20.3	25.40	160.0	30.0	4	22.3	DIN/ANSI
	3.386							.800	1.000	6.299	1.181		.876	

C

D



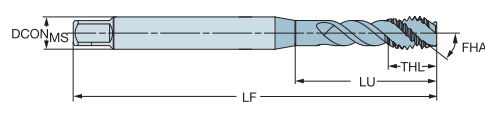
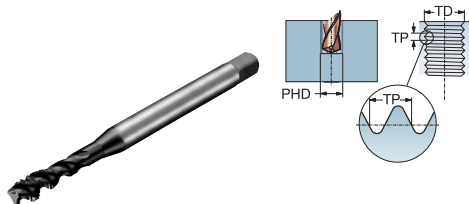
76

CoroTap™ 300 螺旋槽切削丝锥

螺纹形式: UNC

DIN/ANSI

ULDR 3.0
 FHA 48°
 SUBSTRATE HSS-E-PM
 COATING PVD TIALN



										p 尺寸, mm, inch				
TDZ	TPI	LU	CZC _{IS}	THCT	TCTR	订货号	PM	DCON _{IS}	TD	LF	THL	NOF	PHD	BSG
UNC#8-32	32.00	21.00	.168 x .131	C	2BX	T300-PM114AE-9-32	★	4.3	4.17	63.0	7.0	3	3.5	DIN/ANSI
		.827						.168	.164	2.480	.276		.138	
UNC1/4-20	20.00	25.00	.255 x .191	C	2BX	T300-PM114AE-1/4	★	6.5	6.35	80.0	10.0	3	5.1	DIN/ANSI
		.984						.255	.250	3.150	.394		.201	
UNC5/16-18	18.00	33.50	.318 x .238	C	2BX	T300-PM114AE-5/16	★	8.1	7.94	90.0	12.0	3	6.6	DIN/ANSI
		1.319						.318	.313	3.543	.472		.260	
UNC3/8-16	16.00	38.00	.381 x .286	C	2BX	T300-PM114AE-3/8	★	9.7	9.53	100.0	16.0	3	8.0	DIN/ANSI
		1.496						.381	.375	3.937	.630		.315	



A

攻丝

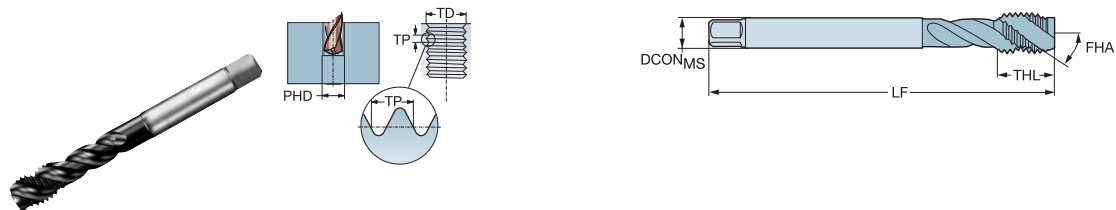
切削丝锥

CoroTap™ 300 螺旋槽切削丝锥

螺纹形式: UNC

DIN/ANSI

ULDR 3.0
 FHA 48°
 SUBSTRATE HSS-E-PM
 COATING PVD TIALN



B

														p 尺寸, mm, inch	
TDZ	TPI	LU	CZG _S	THCHT	TCTR	订货号	ITEM	DCON _{MS}	TD	LF	THL	NOF	PHD	BSG	
UNC1/2-13	13.00	55.00	.367 x .275	C	2BX	T300-PM115AE-1/2	★	9.3	12.70	110.0	18.0	3	10.8	DIN/ANSI	
		2.165						.367	.500	4.331	.709		.425		
UNC5/8-11	11.00	55.00	.480 x .360	C	2BX	T300-PM115AE-5/8	★	12.2	15.88	110.0	20.0	4	13.5	DIN/ANSI	
		2.165						.480	.625	4.331	.787		.531		
UNC3/4-10	10.00	72.00	.590 x .442	C	2BX	T300-PM115AE-3/4	★	15.0	19.05	125.0	25.0	4	16.5	DIN/ANSI	
		2.835						.590	.750	4.921	.984		.650		

C

D



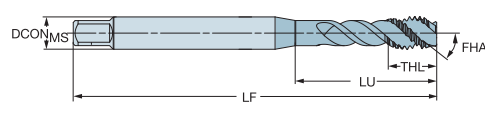
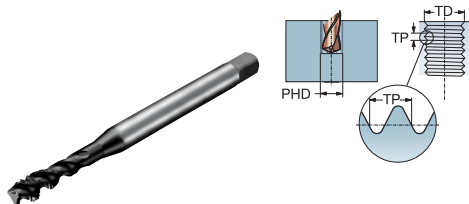
76

CoroTap™ 300 螺旋槽切削丝锥

螺纹形式: UNF

DIN/ANSI

ULDR 3.0
 FHA 48°
 SUBSTRATE HSS-E-PM
 COATING PVD TIALN



										p 尺寸, mm, inch				
TDZ	TPI	LU	CZC _{IS}	THCT	TCR	订货号	PM	DCON _{IS}	TD	LF	THL	NOF	PHD	BSG
UNF8-36	36.00	21.00	.168 x .131	C	3BX	T300-PM100AF-8-36	★	4.3	4.17	63.0	7.0	3	3.5	DIN/ANSI
		.827						.168	.164	2.480	.276		.138	
UNF10-32	32.00	27.50	.194 x .152	C	3BX	T300-PM100AF-10-32	★	4.9	4.83	70.0	8.5	3	4.1	DIN/ANSI
		1.083						.194	.190	2.756	.335		.161	
UNF1/4-28	28.00	25.00	.255 x .191	C	3BX	T300-PM100AF-1/4	★	6.5	6.35	80.0	10.0	3	5.5	DIN/ANSI
		.984						.255	.250	3.150	.394		.217	
UNF5/16-24	24.00	33.50	.318 x .238	C	3BX	T300-PM100AF-5/16	★	8.1	7.94	90.0	12.0	3	6.9	DIN/ANSI
		1.319						.318	.313	3.543	.472		.272	
UNF3/8-24	24.00	38.00	.381 x .286	C	3BX	T300-PM100AF-3/8	★	9.7	9.53	100.0	16.0	3	8.5	DIN/ANSI
		1.496						.381	.375	3.937	.630		.335	



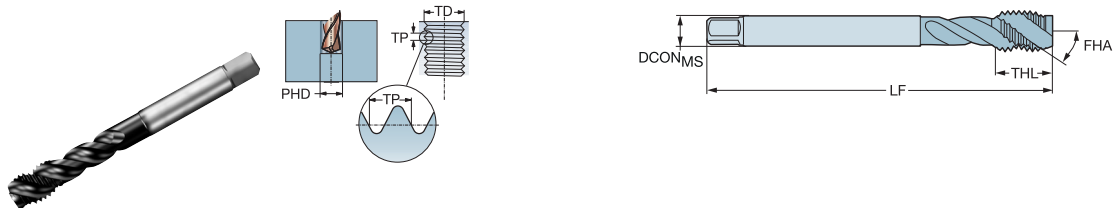
CoroTap™ 300 螺旋槽切削丝锥

螺纹形式: UNF

DIN/ANSI

ULDR
FHA
SUBSTRATE
COATING

3.0
48°
HSS-E-PM
PVD TiAlN



													p	尺寸, mm, inch	
TDZ	TPI	LU	CZC _{MS}	THCHT	TCTR	订货号	PTIN	DCON _{MS}	TD	LF	THL	NOF	PHD	BSG	
UNF7/16-20	20.00	48.00	.323 x .242	C	3BX	T300-PM101AF-7/16	★	8.2	11.11	100.0	15.0	3	9.9	DIN/ANSI	
		1.890						.323	.438	3.937	.591		.390		
UNF1/2-20	20.00	55.00	.367 x .275	C	3BX	T300-PM101AF-1/2	★	9.3	12.70	110.0	18.0	3	11.5	DIN/ANSI	
		2.165						.367	.500	4.331	.709		.453		
UNF5/8-18	18.00	55.00	.480 x .360	C	3BX	T300-PM101AF-5/8	★	12.2	15.88	110.0	20.0	4	14.5	DIN/ANSI	
		2.165						.480	.625	4.331	.787		.571		
UNF3/4-16	16.00	72.00	.590 x .442	C	3BX	T300-PM101AF-3/4	★	15.0	19.05	125.0	25.0	4	17.5	DIN/ANSI	
		2.835						.590	.750	4.921	.984		.689		
UNF7/8-14	14.00	81.00	.697 x .523	C	3BX	T300-PM101AF-7/8	★	17.7	22.23	140.0	25.0	4	20.4	DIN/ANSI	
		3.189						.697	.875	5.512	.984		.803		
UNF1-12	12.00	86.00	.800 x .600	C	3BX	T300-PM101AF-1	★	20.3	25.40	160.0	30.0	4	23.3	DIN/ANSI	
		3.386						.800	1.000	6.299	1.181		.915		

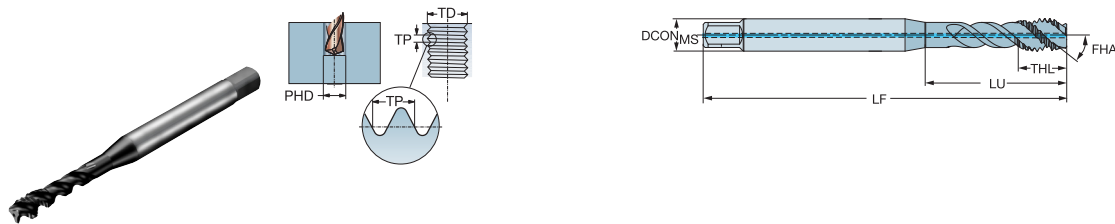


CoroTap™ 300 螺旋槽切削丝锥

螺纹形式: UNF

DIN/ANSI

ULDR 3.0
 FHA 48°
 CNCS 1
 CXSC 1
 SUBSTRATE HSS-E-PM
 COATING PVD TiAlN



										p 尺寸, mm, inch				
TDZ	TPI	LU	CZC _{IS}	THCHT	TCTR	订货号	PTM	DCON _{IS}	TD	LF	THL	NOF	PHD	BSG
UNF10-32	32.00	27.50	.194 x .152	C	2BX	T300-PM104AF-10-32	★	4.9	4.83	70.0	9.0	3	4.1	DIN/ANSI
		1.083						.194	.190	2.756	.354		.161	
UNF1/4-28	28.00	24.50	.255 x .191	C	2BX	T300-PM104AF-1/4	★	6.5	6.35	80.0	10.0	3	5.5	DIN/ANSI
		.965						.255	.250	3.150	.394		.217	
UNF5/16-24	24.00	33.00	.318 x .238	C	2BX	T300-PM104AF-5/16	★	8.1	7.94	90.0	12.0	3	6.9	DIN/ANSI
		1.299						.318	.313	3.543	.472		.272	
UNF3/8-24	24.00	38.00	.381 x .286	C	2BX	T300-PM104AF-3/8	★	9.7	9.53	100.0	16.0	3	8.5	DIN/ANSI
		1.496						.381	.375	3.937	.630		.335	



A

攻丝

切削丝锥

CoroTap™ 300 螺旋槽切削丝锥

螺纹形式: UNF

DIN/ANSI

ULDR	3.0
FHA	48°
CNSC	1
CXSC	1
SUBSTRATE	HSS-E-PM
COATING	PVD TIALN

B

		p		尺寸, mm, inch										
		P/M												
TDZ	TPI	LU	CZC _{MS}	THCHT	TCTR	订货号	DCON _{MS}	TD	LF	THL	NOF	PHD	BSG	
UNF1/2-20	20.00	55.00	.367 x .275	C	2BX	T300-PM105AF-1/2	★	9.3	12.70	110.0	18.0	3	11.5	DIN/ANSI
	2.165							.367	.500	4.331	.709		.453	
UNF5/8-18	18.00	55.00	.480 x .360	C	2BX	T300-PM105AF-5/8	★	12.2	15.88	110.0	20.0	4	14.5	DIN/ANSI
	2.165							.480	.625	4.331	.787		.571	

C

D

76

A 72

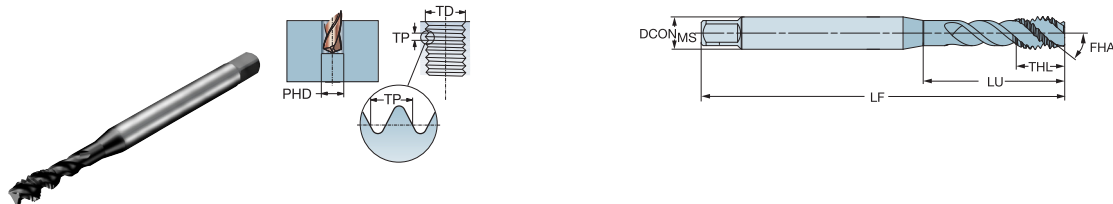
100

CoroTap™ 300 螺旋槽切削丝锥

螺纹形式: UNF

DIN/ANSI

ULDR 3.0
 FHA 48°
 SUBSTRATE HSS-E-PM
 COATING PVD TIALN



										p 尺寸, mm, inch				
TDZ	TPI	LU	CZC _{IS}	THCT	TCTR	订货号	PM	DCON _{IS}	TD	LF	THL	NOF	PHD	BSG
UNF1/4-28	28.00	25.00	.255 x .191	C	2BX	T300-PM114AF-1/4	★	6.5	6.35	80.0	10.0	3	5.5	DIN/ANSI
		.984						.255	.250	3.150	.394		.217	
UNF5/16-24	24.00	33.50	.318 x .238	C	2BX	T300-PM114AF-5/16	★	8.1	7.94	90.0	12.0	3	6.9	DIN/ANSI
		1.319						.318	.313	3.543	.472		.272	
UNF3/8-24	24.00	38.00	.381 x .286	C	2BX	T300-PM114AF-3/8	★	9.7	9.53	100.0	16.0	3	8.5	DIN/ANSI
		1.496						.381	.375	3.937	.630		.335	



A

攻丝

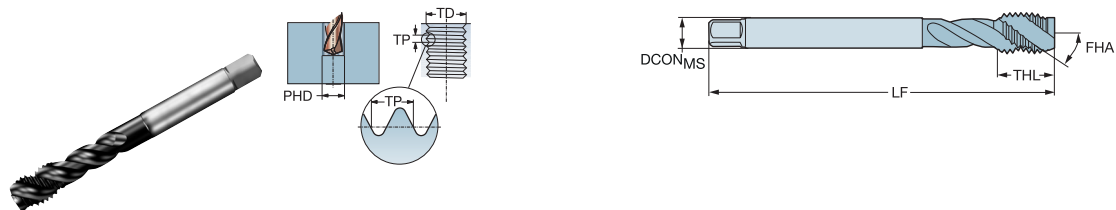
切削丝锥

CoroTap™ 300 螺旋槽切削丝锥

螺纹形式: UNF

DIN/ANSI

ULDR 3.0
 FHA 48°
 SUBSTRATE HSS-E-PM
 COATING PVD TIALN



B

													p 尺寸, mm, inch	
TDZ	TPI	LU	CZG _S	THCT	TCTR	订货号	尺寸	DCON _{MS}	TD	LF	THL	NOF	PHD	BSG
UNF1/2-20	20.00	55.00	.367 x .275	C	2BX	T300-PM115AF-1/2	★	9.3	12.70	110.0	18.0	3	11.5	DIN/ANSI
		2.165						.367	.500	4.331	.709		.453	
UNF5/8-18	18.00	55.00	.480 x .360	C	2BX	T300-PM115AF-5/8	★	12.2	15.88	110.0	20.0	4	14.5	DIN/ANSI
		2.165						.480	.625	4.331	.787		.571	
UNF3/4-16	16.00	72.00	.590 x .442	C	2BX	T300-PM115AF-3/4	★	15.0	19.05	125.0	25.0	4	17.5	DIN/ANSI
		2.835						.590	.750	4.921	.984		.689	

C

D



76

通用信息

ISO 13399	76
冷却液供应信息	79
安全信息	80
山特维克可乐满再循环计划 (CRC)	81

ISO 13399 是一项致力于简化切削刀具数据交换的国际标准。您将注意到每种刀具新参数和说明的细微差别。

这种描述切削刀具产品数据的标准方式目前尚属首次出现。如果业内的所有刀具能共享相同的参数和定义，那么在软件系统之间传递刀具信息就变得非常简单。

这对您意味着什么？

首先，这意味着我们双方的系统能够进行对接，因为它们使用相同的语言。您可以从我们的网站下载产品数据，然后在您的 CAD/CAM 软件中直接组合出用于生产的各种刀具。您无需在样本中查找信息，也无需等待不同系统间数据的转换。想像一下，这将会为您节省多少时间！

缩写

首选名称

ADJLN	调整下限
ADJLX	调整上限
ADJRG	调整范围
ALP	轴向后角
AN	主后角
ANN	副后角
APMX	最大切深
APMX_EFW	最大切削深度 - 纵向定程进刀
APMX_FFW	最大切削深度 - 侧面进刀
AZ	最大插铣深度
B	刀柄宽度
BAWS	工件侧刀体角度
BAMS	机床侧的刀体角度
BBD	设计平衡
BBR	通过旋转测试平衡
BCH	刀尖倒角长度
BD	本体直径
BHTA	刀体半锥角
BN	负倒棱宽度
BS	Wiper (修光刃) 长度
BSG	基本标准组
BSR	修光刃半径
CBMD	断屑槽制造商
CDX	最大悬伸
CEMR	切削刃主半径
CF	牙顶宽度
CHBA	刀体倒角角度
CHBL	刀体倒角长度
CHW	刀尖倒角宽度
CICT	切削部件数
CICT ^{BALL}	切削部件数 - 球头刀片
CICT ^E	切削部件数 - 极限位置
CICT ^P	切削部件数 - 周边位置
CICT ^S	切削部件数 - 侧面位置
CICT ^{SP}	切削部件数 - 刀杆保护刀片
CICT ^T	切削部件数 - 总数
CND	冷却液入口直径
CNSC	冷却液入口型式代码
CNT	冷却液入口螺纹尺寸
COATING	涂层
CP	最大冷却液压力
CRKS	连接固定旋钮螺纹型号
CRNT	冷却液径向入口螺纹尺寸
CTPT	工序类型
CUTDIA	最大工件切断直径
CW	刀片宽度
CWN	最小切削宽度
CWTOLL	刀片宽度公差下限
CWTOLU	刀片宽度公差上限
CWX	最大切削宽度
CXSC	内冷却液出口形式
CZC	连接尺寸代码
CZC _{MS}	机床侧连接型号代码
CZC _{WS}	工件侧连接型号代码
D1	固定孔直径
DAH	检修孔直径
DAXIN	轴向槽最小内径
DAXN	端面槽最小外径

DAXX	轴向槽最大外径
DBC	螺栓直径
DC	切削直径
DCB	螺栓直径
DCBN	最小连接孔直径
DCBX	最大连接孔直径
DCF	刀面接触切削直径
DCIN	切削内径
DCN	最小切削直径
DCON	连接直径
DCON _{MS}	机床侧连接直径
DCON _{WS}	工件侧连接直径
DCON _{NWS}	工件侧最小接口直径
DCON _{XWS}	工件侧最大接口直径
DCPS	数据切屑的尺寸
DCSF _{MS}	机床侧接触表面直径
DCSF _{WS}	工件侧接触表面直径
DCX	最大切削直径
DHUB	毂直径
DIX	换刀器最大干涉直径
DMIN	最小加工孔径
DMM	刀柄直径
DN	颈部直径
DRVCT	驱动器数
DSGN	设计
EPSR	刀片夹角
FHA	螺旋角
FLGT	法兰厚度
FTDZ	螺纹直径尺寸
GB	负倒棱角度
H	刀柄高度
HA	螺纹理论高度
HB	螺纹高度差
HBH	切削头底部偏置高度
HC	实际螺纹高度
HF	工作高度
HRY	参考平面的最低点
HSUP	支撑高度
HTB	刀体高度
HTH	高度
IC	内切圆直径
INSL	刀片长度
INSUC	刀片用途代码
IZC	刀片型号代码
KAPR	主偏角
KAPR_EFW	刀具切削刃角度 - 纵向定程进刀
KCH	刀尖倒角
KRINS	主切削刃角
KWW	键槽宽度
L	切削刃长度
LAMS	刃倾角
LB	刀体长度
LCF	容屑槽长度
LCOX	最大切断长度
LE	切削刃有效长度
LF	总长度
LFN	最小功能长度
LH	切削头长度
LPR	伸出长度
LS	刀柄长度
LSC	夹紧长度
LSCN	最小夹紧长度
LSCS	至夹紧起点的距离
LSCX	最大夹紧长度
LSD	刀柄绝对长度
LU	有效长度 (最大推荐值)
LU_BFW	可用长度 - 背面铣
LUX	最大有效长度
MHD	安装孔距离
MIID	主刀片标识
MIID _E	主刀片标识 - 极限位置
MIID _S	主刀片标识 - 侧面位置
MIID _C	主刀片标识 - 中心位置
MIID _P	主刀片标识 - 周边位置
MIID _I	主刀片标识 - 中间位置
MMCC	预调扭矩的订货号
MMCX	最大切削扭矩
NOF	容屑槽数
NT	齿数
OAH	总高
OAL	总长度
OAW	总宽
OH	推荐悬伸
OHN	最小悬伸

OHX	最大悬伸
ORCODE	订货号
PCL	周边圆柱柄长度
PDX	轮廓距离 ex
PDY	轮廓距离 ey
PHD	预加工孔直径
PHDX	最大预加工孔直径
PL	顶尖长度
PNA	包括角度的轮廓
PRFRAD	轮廓半径
PRSPC	轮廓规格
PSIR	刀具导程角
PSIRL	左手主切削刃角
PSIRR	右手主切削刃角
PSW	预加工槽宽度
RADH	径向刀体高度
RADW	径向刀体宽度
RAR	右手后角
RE	刀尖圆角半径
REEQ	刀尖圆角半径等值
REL	左侧刀尖圆角半径
RER	右侧刀尖圆角半径
RETOLL	刀尖半径公差下限
RETOLU	刀尖半径公差上限
RGL	重新研磨长度
RMPX	最大坡走角
RPMX	最大转速
S	刀片厚度
SDL	台阶直径长度
SIG	刀尖角
SPTL	分型线
SSC	刀片座型号
SSC _E	刀片座尺寸代码 - 极限位置
SSC _P	刀片座尺寸代码 - 周边位置
SSC _S	刀片座尺寸代码 - 侧面位置
STA	台阶夹角
STDNO	标准编号
SUBSTRATE	刀具基体
TCDC	切削直径公差等级
TCDCON	接口直径公差
TCDDM	刀柄直径公差
TCHA	可获得的孔公差
TCHAL	可达到的孔公差下限
TCHAU	可达到的孔公差上限
TCT	刀具公差等级
TCTR	螺纹公差等级
TD	螺纹直径
TDZ	螺纹直径尺寸
TFLA	丝锥前部浮动长度
TFLB	丝锥后部浮动长度
TG	丝锥梯度
THBTP	螺纹背锥特性
THCA	螺纹螺旋校正角度
THCHT	螺纹加工倒角类型
THFT	螺纹形式
THFTS	标准系列螺纹牙型
THL	螺纹长度
THUB	轮毂厚度
TP	螺距
TPI	每英寸螺纹牙数
TPIN	每英寸最少螺纹牙数
TPIX	每英寸最大螺纹牙数
TPN	最小螺距
TPT	螺纹牙型类型
TPX	最大螺距
TRMAX	丝锥最大范围
TQ	力矩
TSYC	刀具类型代码
TTP	螺纹类型
ULDR	可加工长度的直径比
VCX	最大切削速度
W1	刀片宽度
WB	刀体宽度
WF	工作宽度
WFCIRP	至切削部件参考点的宽度
WSC	夹紧宽度
WT	重量
ZADJ	可调刀片数
ZEFF	端面有效切削刃数
ZEPF	周边有效切削刃计数 (ZEFP)
ZWX	最大 Wiper (修光刃) 刀片数

CNSC

冷却液入口型式代码

订货号	非合金	图片
0	不使用冷却液	
1	轴向同心入口	
2	径向入口	
3	轴向同心入口和径向入口	
4	圆周轴向同心入口	
5	接杆前的径向入口	
6	法兰上的分散入口	
7	法兰上的分散入口及径向入口	
8	刀柄槽上的分散入口	

CXSC

内冷却液出口形式

订货号	非合金	图片
0	无冷却液出口	
1	轴向同心出口	
2	径向出口	
3	轴向倾斜出口	
4	圆周轴向同心出口	
5	轴向倾斜出口，带可调节喷嘴	
6	分散出口，带可调节喷嘴	
7	刀柄槽上的分散入口	
8	轴向出口或分散出口，带可调节喷嘴	

与硬质合金磨削有关的安全信息

材料成分

绝大多数的金属产品含有碳化钨和钴。其他硬金属的元素可能是碳化钛、碳化钽、碳化铌、碳化铬、碳化钼或碳化钒等。有些牌号还含有碳氮化钛和 / 或碳镍化钛。

污染途径

磨削或焊接硬质合金材料时会产生含有害成份的粉尘或气体，有可能会吸入肺部，刺激皮肤或眼睛。

急性中毒

粉尘吸入会毒害身体。吸入粉尘使呼吸道受刺激而引起发炎。据报道，同时吸入钴和碳化钨毒性会更大。

皮肤接触会受到刺激而引起皮疹。敏感性人群可能会因此而产生过敏反应。

慢性中毒

反复吸入含钴的悬浮颗粒会引起呼吸道不畅，长期吸入会引起肺组织纤维化或导致肺癌。流行病学研究表明，过度暴露在高浓度碳化钨 / 钴环境中会增加工人患肺癌的危险。

钴和镍是强烈的皮肤敏感源，反复或长期接触会引起刺激和过敏。

危险用语

中毒：长期暴露通过吸入而严重损害健康的危险

吸入中毒

有可能会致癌。

通过吸入或皮肤接触而引起的过敏。

预防措施

避免形成和吸入粉尘。局部适当通风，保证环境粉尘度低于允许值。

如果通风条件不好，请使用专业呼吸面罩。

必要时可使用防护目镜。

避免反复的皮肤接触，戴防护手套。操作后彻底清洗皮肤。

穿合适的防护衣。需要时请换洗衣服。

勿在工作区吃喝东西或吸烟。吃喝东西和吸烟前请彻底清洗皮肤。



为了我们的家园

现在就加入山特维克可乐满再循环计划 (CRC) !

山特维克可乐满再循环计划 (CRC) 是山特维克可乐满为所有客户提供的一项综合服务, 其目的在于回收废旧的硬质合金刀片和整体硬质合金刀具。

随着不可再生原材料的使用量不断增加, 所有生产厂商有责任更经济地使用现有资源。

山特维克可乐满正致力于提供报废硬质合金刀片和整体硬质合金刀具的回收并以最环保的方式加以循环再利用。

请将所有废旧的硬质合金刀片都回收到处削场所的回收箱里。

当回收箱装满后, 可以将报废刀具转移到一个运输箱中。当运输箱已满后, 则可以运送到离您最近的山特维克可乐满办事处或分销商处, 他们还将为您提供更多的信息。

山特维克可乐满再循环计划 (CRC) 所能带来的好处:

- 已通过 ISO 和 OHSAS 认证的全球一站式回收系统。
- 面向山特维克可乐满的所有客户。
- 回收箱和运输箱操作方便
- 减少废弃物, 减轻对环境的压力
- 更好地利用资源。
- 也接受其它厂商的硬质合金刀片。

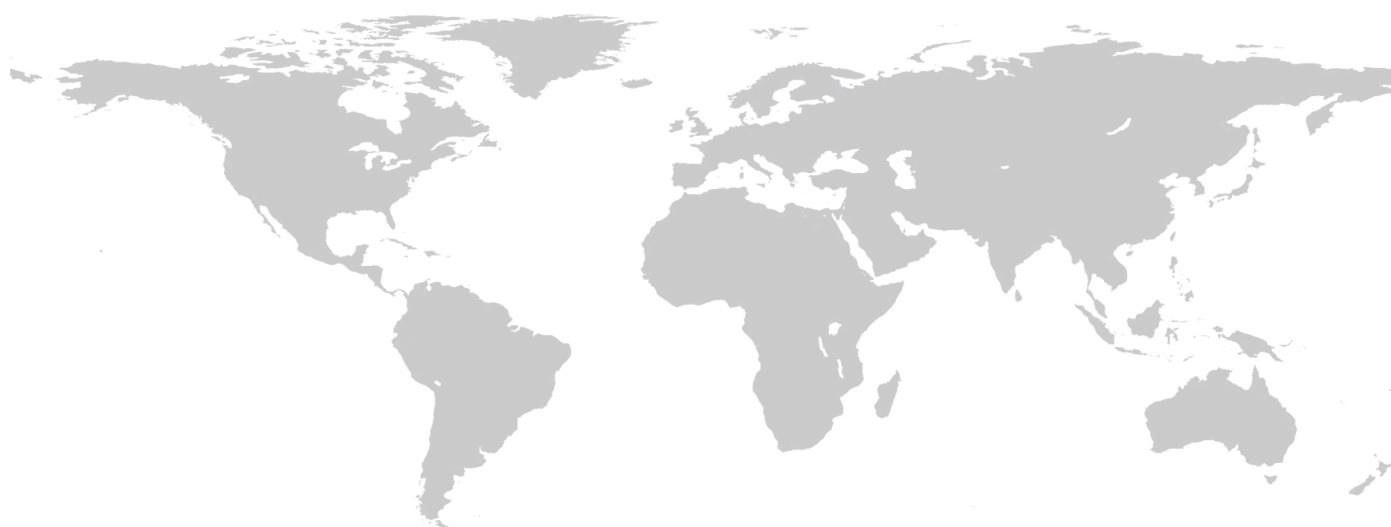


现在就为您的车床、铣床、钻床以及加工中心订购回收箱。我们建议为每个工作站分别配置一个刀片回收箱和一个整体硬质合金刀具分离箱。

有关如何出售废旧硬质合金的详细说明, 请访问网址 www.sandvik.coromant.com 并选择相应的市场。

收集箱:	订货号
用于回收整体硬质合金刀具的运输箱 (胶合板):	91617
用于回收刀片的运输箱 (胶合板):	92994
	92995

www.sandvik.coromant.com



Head office:
AB Sandvik Coromant
SE-811 81 Sandviken, Sweden
www.sandvik.coromant.com
E-mail: info.coromant@sandvik.com

C-2900:170

